

Repetitive Losses in Study Area – Wayne County

Community	Number of Losses	Total Claims Paid
HURON, TOWN OF	4	\$45,873

*May include repetitive losses outside of watershed boundary(s)

Letters of Map Change (LOMCs)

Number of Communities with LOMCs	Number of LOMCs
16	64

*May include LOMCs outside of county boundary(s)

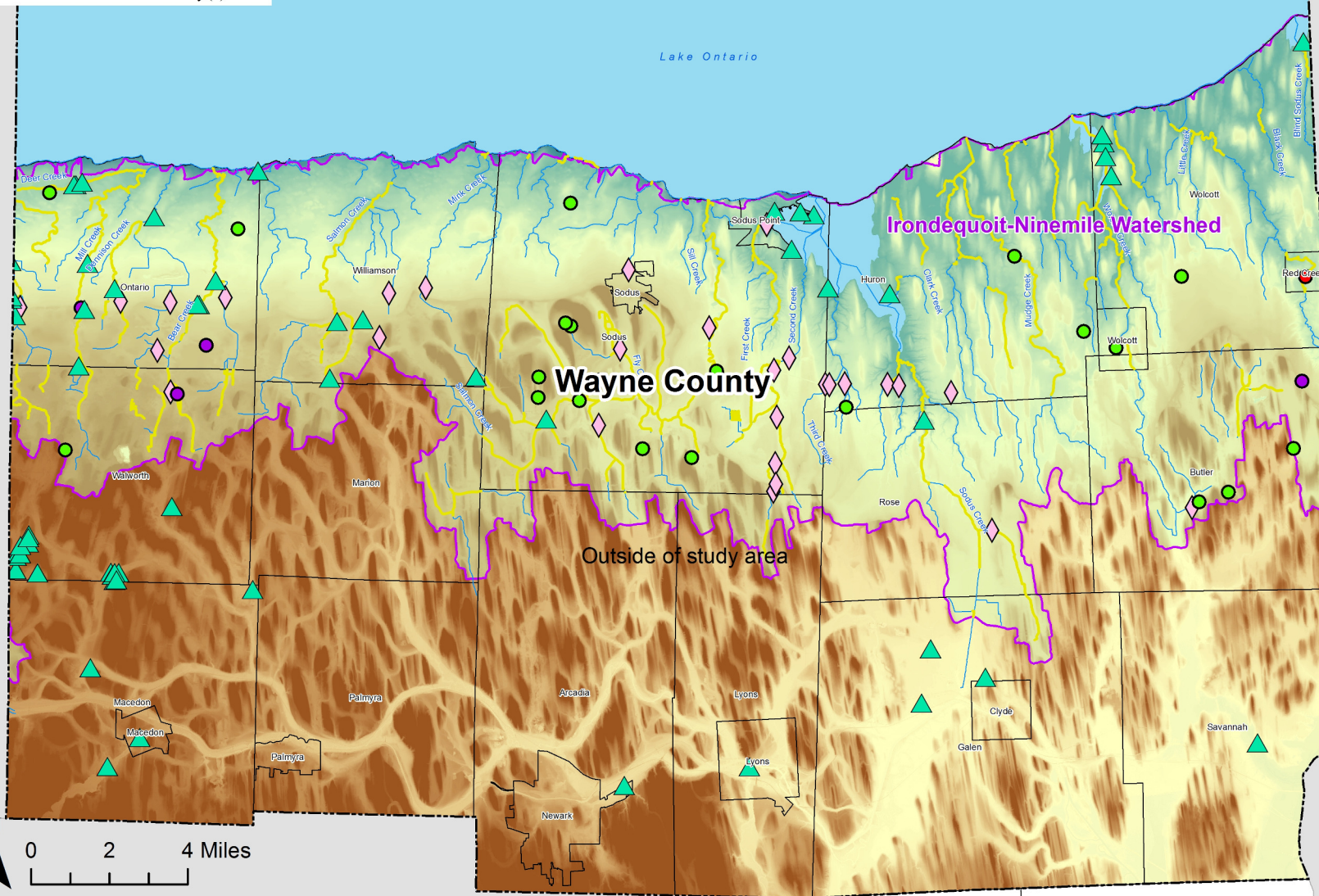
CNMS Mileage

Validation Status	Miles
VALID	9.0
UNKNOWN	164.5
UNVERIFIED	0

*May include CNMS stream segments outside of watershed boundary(s)

Hazard Mitigation Plan Status

Expiration Date
5/1/2019



DISCOVERY MAP 1: Wayne County, New York

MAP SYMBOLOGY

LEGEND

- County Boundary
- Municipal Boundary
- Native American Reservation
- Study Area
- Water Bodies
- River
- HUC8 Boundary
- Repetitive Loss Structures/Clusters
- LOMCs
- Large Culverts
- Active USGS Gage
- Inactive USGS Gage

High
Digital Elevation Model
Low

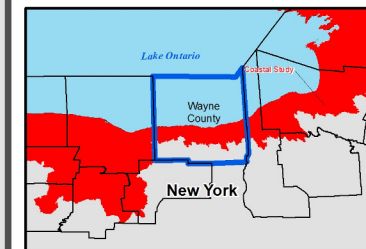
DAM CLASSIFICATION

- Unclassified
- Low Hazard
- Moderate Hazard
- High Hazard

CNMS VALIDATION STATUS

- VALID
- UNKNOWN
- UNVERIFIED

STUDY LOCATOR



NATIONAL FLOOD INSURANCE PROGRAM Discovery Map 1 of 2

WAYNE COUNTY, NY Lake Ontario Discovery



FEMA



Department of
Environmental
Conservation

DISCOVERY RELEASE DATE:
JULY 2016