

DISCOVERY MAP 1: Orleans County, New York

MAP SYMBOLOGY

LEGEND

- County Boundary
- Municipal Boundary
- Native American Reservation
- Study Area
- Water Bodies
- River
- HUC8 Boundary
- Repetitive Loss Structures/Clusters
- LOMCs
- Large Culverts
- Active USGS Gage
- Inactive USGS Gage

High
Digital Elevation Model
Low

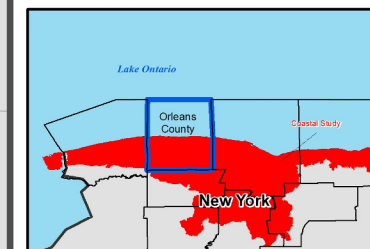
DAM CLASSIFICATION

- Unclassified
- Low Hazard
- Moderate Hazard
- High Hazard

CNMS VALIDATION STATUS

- VALID
- UNKNOWN
- UNVERIFIED

STUDY LOCATOR

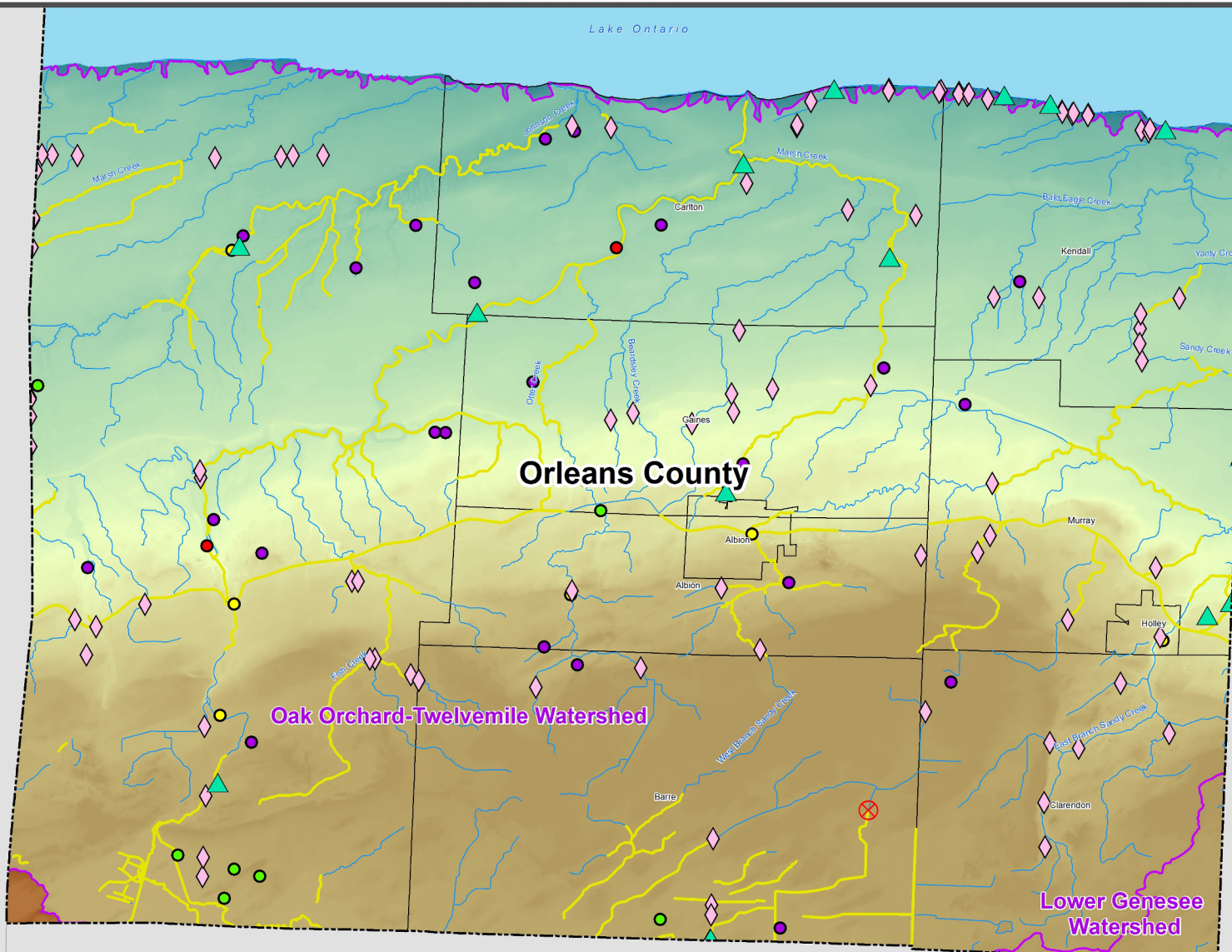


NATIONAL FLOOD INSURANCE PROGRAM
Discovery Map 1 of 2

ORLEANS COUNTY, NY
Lake Ontario Discovery



DISCOVERY RELEASE DATE:
JULY 2016



CNMS Mileage

Validation Status	Miles
VALID	0
UNKNOWN	192.9
UNVERIFIED	0

Hazard Mitigation Plan Status

Expiration Date
9/2/2013

Repetitive Losses in Study Area – Orleans County

Community	Number of Losses	Total Claims Paid
CARLTON, TOWN OF	2	\$7,193

*May include repetitive losses outside of watershed boundary(s)

Genesee County

Letters of Map Change (LOMCs)

Number of Communities with LOMCs	Number of LOMCs
7	13

*May include LOMCs outside of watershed boundary(s)

0 2 4 Miles

