

# DISCOVERY MAP 2: Oneida County, New York

## MAP SYMBOLOGY

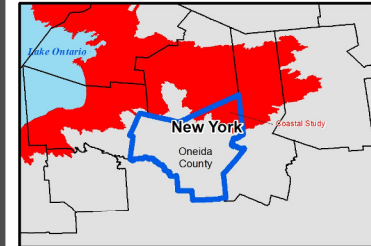
**LEGEND**

- County Boundary
- Municipal Boundary
- Native American Reservation
- Special Flood Hazard Area
- Study Area
- Water Bodies
- State Route
- River
- HUC8 Boundary
- Approximate Stream Study Request
- Detailed Stream Study Request

**Average Annualized Loss  
Total Losses (U.S. Dollars)**

- 1 - 25,000
- 25,001 - 100,000
- 100,001 - 250,000
- 250,001 - 500,000
- 500,001 - 810,000

## STUDY LOCATOR



NATIONAL FLOOD INSURANCE PROGRAM  
Discovery Map 2 of 2

**ONEIDA COUNTY, NY**  
Lake Ontario Discovery

 **FEMA**  **Dewberry**

 **NEW YORK STATE** **Department of Environmental Conservation**

DISCOVERY RELEASE DATE:  
JULY 2016