

DRAFT

Coastal Scoping Report

Great Lakes Coastal Flood Study

Lake Huron

Bay County and Huron County

Individual Coastal Scoping Report

Report Number 01

Draft - April 2014



FEMA

U.S. Department of Homeland Security
Federal Emergency Management Agency Region V
536 South Clark Street, 6th Floor
Chicago, Illinois 60605

SUBMITTED BY:



125 S. Wacker Drive, Suite 600
Chicago, IL 60606

Date Submitted: Draft April 2014

DRAFT

Project Area Community List

This list includes all communities within the Project Area covered by this report for the Great Lakes Coastal Study under consideration for new Federal Emergency Management Agency (FEMA) Risk Mapping, Assessment, and Planning (Risk MAP) products and datasets, which may include Flood Insurance Studies (FISs) and Flood Insurance Rate Maps (FIRMs). Not all communities will receive new/updated FEMA Risk MAP products and datasets or FISs and FIRMs.

Bay County*	Huron County*
Bangor, Township of	Bloomfield, Township of
Bay City, City of	Caseville, Township of
Essexville, City of	Caseville, Village of
Fraser, Township of	Dwight, Township of
Hampton, Township of	Fairhaven, Township of
Kawkawlin, Township of	Gore, Township of
Monitor, Township of	Harbor Beach, City of
Pinconning, City of	Hume, Township of
Pinconning, Township of	Huron, Township of
	Lake, Township of
	McKinley, Township of
	Port Austin, Township of
	Port Austin, Village of
	Port Hope, Village of
	Rubicon, Township of
	Sand Beach, Township of
	Sebewaing, Township of
	Sebewaing, Village of
	Sherman, Township of
	Winsor, Township of

*In Michigan, only those jurisdictions known to be responsible for administering floodplain ordinances and potentially affected by the upcoming Lake Huron coastal flood study were included in this Coastal Scoping process. However, all coastal communities are encouraged to participate in the future Lake Huron coastal flood study process and may request to be included in future correspondence regarding the Lake Huron coastal flood study.

Table of Contents

Acronyms and Abbreviations.....	5
I. Coastal Scoping Overview	7
i. Great Lakes Coastal Flood Study	7
ii. Purpose of Great Lakes Coastal Scoping.....	8
iii. Coastal Flood Risk Products.....	9
II. Stakeholder Communication and Coordination	11
i. Lake Huron Coastal Scoping Stakeholder Coordination.....	11
III. Coastal Scoping Meeting.....	13
IV. Summary of Data Analysis.....	15
i. Data that can be used for future Coastal Flood Risk Products	17
I.IV.i.1 Average Annualized Loss (AAL) Data	18
I.IV.i.2 Coastal Recession.....	18
I.IV.i.3 Federal Land.....	19
I.IV.i.4 Jurisdictional Boundaries	19
I.IV.i.5 Local Data	19
I.IV.i.6 Publicly Owned Land.....	19
I.IV.i.7 Shoreline Information.....	20
I.IV.i.8 Stream Lines/Hydrograph	21
I.IV.i.9 Topography, Bathymetry, and Oblique Imagery.....	21
I.IV.i.10 Transportation	23
I.IV.i.11 Watershed Boundaries.....	23
ii. Other Data and Information.....	23
I.IV.ii.1 Coastal Barrier Resources Systems	23
I.IV.ii.2 Coastal Flood Protection Measures	24
I.IV.ii.3 Community Assisted Visits	25
I.IV.ii.4 Community Rating System	26
I.IV.ii.5 Coordinated Needs Management Strategy (CNMS) and NFIP Mapping Needs	26
I.IV.ii.6 Critically Eroded Beaches and Beach Nourishment/Dune Replacement Projects	28
I.IV.ii.7 Dams.....	28

I.IV.ii.8	Declared Disasters	28
I.IV.ii.9	Flood Insurance Policies	29
I.IV.ii.10	Gage Data	31
I.IV.ii.11	Historical Flooding and High Water Marks	33
I.IV.ii.12	Letters of Map Change	34
I.IV.ii.13	Ordinance Level.....	34
I.IV.ii.14	Proposed Draft Transects.....	36
I.IV.ii.15	Regulatory Mapping	36
I.IV.ii.16	Repetitive Loss	37
I.IV.ii.17	State-level Data Sets, Programs, and Information.....	39
V.	Risk MAP Projects and Needs	39
i.	Future Coastal Study.....	39
ii.	Potential for Mitigation Assistance.....	40
iii.	Compliance	40
iv.	Communication.....	41
v.	Unmet Needs.....	41
VI.	Close	42
VII.	References	42
VIII.	Attachments.....	44

Table of Contents - continued

List of Tables

Table 1. Data Collected for Bay and Huron Counties	16
Table 2. Hazus AAL Data for Bay and Huron Counties	18
Table 3. Summary of Shoreline Types.....	20
Table 4. Summary of Shoreline by Land Use	20
Table 5. Summary of Shoreline Coverage	20
Table 6. Summary of Shoreline Vegetation Types	21
Table 7. USACE Coastal Structure Inventory	25
Table 8. Summary of Community Assisted Visits in Bay and Huron Counties.....	26
Table 9. CNMS Status for Bay and Huron Counties	27
Table 10. Declared Disasters in Bay and Huron Counties.....	29
Table 11. Summary of Flood Insurance Policies and Claims for Bay and Huron Counties	30
Table 12. NOAA Meteorological Stations on Lake Huron near Bay and Huron Counties	31
Table 13. Stream Gage Stations for Bay and Huron Counties.....	32
Table 14. Summary of LOMC cases in Bay and Huron Counties.....	34
Table 15. Program Status and Ordinance Level	35
Table 16. Effective Mapping Status.....	37
Table 17. Repetitive Loss.....	38

List of Figures

Figure 1: Sample Proposed Draft Transect Figure.....	15
Figure 2: USACE Historic Lake Michigan-Huron Water Level Data (1918 to 2012)	33

Attachments

- Attachment A. Coastal Data Request Form (sample)
- Attachment B. Bay and Huron Counties Pre-Meeting Correspondence [*To be provided in the Final Coastal Scoping Report*]
- Attachment C. Draft Coastal Scoping Maps
- Attachment D. Proposed Draft Transect Figures
- Attachment E. Stakeholder Comments from Coastal Scoping Meeting [*To be provided in the Final Coastal Scoping Report*]
- Attachment F. Bay and Huron Counties Coastal Scoping Meeting Documents [*To be developed following the Coastal Scoping meeting*]
- Attachment G. Coastal Data Request Form Compilation [*To be developed following the Coastal Scoping meeting*]

Acronyms and Abbreviations

AAL	average annualized loss
ASFPM	Association of State Floodplain Managers
BFE	base flood elevations
CAC	Community Assisted Contact
CAV	Community Assistance Visit
CBRS	Coastal Barrier Resources System
CHARTS	Compact Hydrographic Airborne Rapid Total Survey
CHL	Coastal and Hydraulics Laboratory
CID	Community Identification Number
CIS	Community Information System
CMAG	Coastal Management Assistance Grant
C-MAN	Coastal Marine Automated Network
CNMS	Coordinated Needs Management Strategy
CO-OPS	Center for Operational Oceanographic Products and Services
CRS	Community Rating System
CSLF	changes since last FIRM
DEM	digital elevation model
DFO	Department of Fisheries and Oceans
DTM	digital terrain model
ECID	Enterprise Coastal Inventory Database
ERDC	Engineer Research and Development Center
ESRI	Environmental Systems Research Institute
FEMA	Federal Emergency Management Agency
FIPS	Federal Information Processing Standards
FIRM	Flood Insurance Rate Map
FIS	Flood Insurance Study
GIS	geographic information system
GLCFS	Great Lakes Coastal Flood Study
GLCRG	Great Lakes Coastal Restoration Grant
Hazus-MH	Multi-Hazard Risk Assessment and Loss Estimation Software Program
HMA	Hazard Mitigation Assistance
HUC8	Hydrologic Unit Code 8
HWM	High Water Mark
LiDAR	Light Detection and Ranging
LiMWA	Limit of Moderate Wave Action
LOMA	Letter of Map Amendment

LOMC	Letter of Map Change
LOMR	Letter of Map Revision
LOMR-F	Letter of Map Revision based on Fill
MIP	Mapping Information Platform
MLI	Midterm Levee Inventory
MNUSS	Mapping Needs Update Support System
MPTA	Mitigation Planning Technical Assistance
MSC	Map Service Center
NCMP	National Coastal Mapping Program
NDBC	National Data Buoy Center
NFIP	National Flood Insurance Program
NGDC	National Geophysical Data Center
NID	National Inventory of Dams
NOAA	National Oceanic and Atmospheric Administration
NWS	National Weather Service
Risk MAP	Risk Mapping, Assessment, and Planning
RL	repetitive loss
RLTG	Repetitive Loss Target Group
SFHA	Special Flood Hazard Area
SHMO	state hazard mitigation officer
USACE	U.S. Army Corps of Engineers

I. Coastal Scoping Overview

The Federal Emergency Management Agency (FEMA) Risk Mapping, Assessment, and Planning, or Risk MAP, program, helps communities identify, assess, and reduce their flood risk. Through Risk MAP, FEMA provides information to enhance local mitigation plans, improve community outreach, and increase local resilience to floods.

During the Coastal Scoping phase of Risk MAP project development, FEMA:

- Gathers information about local flood risk and flood hazards
- Reviews mitigation plans to understand local mitigation capabilities, hazard risk assessments, and current or future mitigation activities
- Supports communities within the coastal area to develop a vision for the future
- Collects information from communities about their flooding history, development plans, daily operations, and stormwater and floodplain management activities
- Uses all information gathered to determine which areas require mapping, risk assessment, or mitigation planning assistance through a Risk MAP project
- Develops Coastal Scoping Map and Report that summarize and display the Coastal Scoping findings



The Coastal Scoping process involves coordination with Great Lakes stakeholders, data collection and analysis, community interviews, a Coastal Scoping meeting with stakeholders affected by the study, and development of recommendations based on an analysis of data and information gathered throughout the process.

i. Great Lakes Coastal Flood Study

FEMA has initiated a coastal analysis and mapping study that may result in updated Flood Insurance Rate Maps (FIRMs) for coastal counties along the Great Lakes. The new coastal flood hazard analyses will utilize updated 1-percent-annual-chance (100-year) flood elevations obtained from a comprehensive storm surge study being developed by the U.S. Army Corps of Engineers (USACE).

The Great Lakes Coastal Flood Study (GLCFS) will incorporate modern analysis of historic storm and high water events and provide for updated flood risk information serving United States communities having shoreline along the Great Lakes. The storm surge study is one of the most extensive coastal storm surge analyses to date, encompassing coastal floodplains in the eight states with coastlines on the Great Lakes.



An updated coastal flood study is needed to obtain a better estimate of coastal flood hazards on the Great Lakes. The current, effective FIRMs are outdated primarily due to the age of data and the coastal methodologies used in producing them. Major changes in National Flood Insurance Program (NFIP) policies and methodologies have been implemented since the effective date of many flood insurance studies in the area, creating the need for an update that will reflect a more detailed and complete hazard determination.

The GLCFS includes a system-wide solution that provides a comprehensive analysis of storm and high water events within the Great Lakes Basin. This program is funded through the FEMA Risk MAP program. FEMA, USACE, Association of State Floodplain Managers (ASFPM), state partners, and FEMA contractors will collaborate in updating the coastal methodology and flood maps, and create new flood risk products. FEMA manages the NFIP, which is the cornerstone of the national strategy for preparing communities for flood-related disasters.

ii. Purpose of Great Lakes Coastal Scoping

The Great Lakes Coastal Scoping process includes data collection, information exchange between all governmental levels of stakeholders, spatial data presentation, cooperative discussion with stakeholders to better understand the Great Lakes area, and a collaborative approach on the project planning. The process allows FEMA to continue to vet the Great Lakes coastal study methodologies with a large stakeholder group, discuss local priorities and data, discuss coastal issues, and move towards a project that will successfully identify the risks associated with Great Lakes flooding.

This Coastal Scoping report discusses the communities potentially affected by coastal flooding in Bay and Huron Counties, Michigan. This Coastal Scoping process will help FEMA to better identify the types of datasets or products that will be useful at the local level, especially as it relates to identifying new mitigation strategies and actions, and for use in local planning efforts. Products that may be available to communities as a result of the Great Lakes flood study include updated FIRMs and Flood Insurance Studies (FISs), coastal flood risk products, calibrated models for storm surge and wave analysis on each of

the lakes, and accurate depictions of water level and wave response on each lake occurring during hundreds of actual events. The type of product a community receives is dependent not only on the coastal flood study analysis results and future congressional funding, but also on the type of datasets, local and national, that are available.

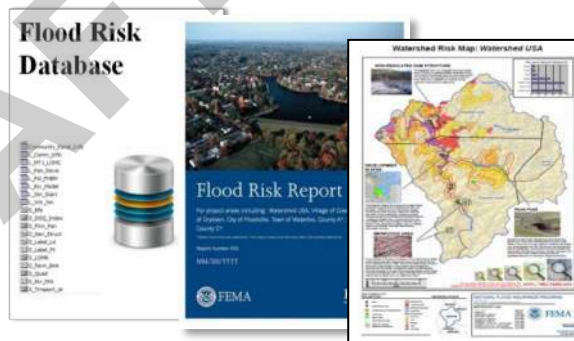
The following section describes the coastal flood risk products that a community may receive, as well as some products that are under development for the Great Lakes study areas.

iii. Coastal Flood Risk Products

As part of a Risk MAP project, FEMA will seek to provide state and community officials with three flood risk products to help them gain a better understanding of flood risk and its potential impact on communities and individuals. These products will also enable communities to move forward with informed mitigation actions to reduce identified risk. Delivery of the products discussed below will depend on available data, results of coastal analysis, local partnerships, and fiscal year funding.

The three products are:

- Flood Risk Database
- Flood Risk Report
- Flood Risk Map



These products will summarize information captured in flood risk datasets that may be generated during a Risk MAP, or flood risk, study. The flood risk datasets could include regular and enhanced products. Standard flood risk datasets, also termed products, are listed below.

- **Changes Since Last FIRM (CSLF)**

The CSLFs serve the following purposes:

- Identify Areas and Types of Flood Zone Change:
 - Compares current effective (previous) with proposed (new) flood hazard mapping.
 - Flood zone changes are categorized and quantified.
- Provide Study/Reach Level Rationale for Changes Including:
 - Methodology and assumptions.

Changes Since Last FIRM	
Data Fields Include	Example Data Values
Old Study Date	e.g. 1985
Old Model Type(s)	e.g. HEC-1 / HEC-2
Old Zone Type	e.g. Zone A
Old Topography	e.g. USGS 10-ft
New Study Info/Methods	Dates, Models, etc.
New Study Zone	e.g. Zone AE
New Topography	e.g. LIDAR 2-ft
New Study Engineering Factors / Changes	e.g. new structures, gages, topo, landuse, etc.
Estimated Structures	e.g. 9
Estimated Population	e.g. 27

- Changes of model inputs or parameters (also known as Contributing Engineering Factors).

- **Flood Depth and Analysis Grids (1-percent-annual-chance event only)**

- Reflect total depth (i.e. stillwater and waves). Will be created for the 1-percent frequency event of the engineering studies performed and as appropriate for the data. Wave runoff areas may not be applicable.
- Created using the regulatory mapping and associated zone breaks as input



- **Flood Risk Assessment (Hazus-MH)**

- Hazus-MH combines science, engineering and mathematical modeling with geographic information system (GIS) technology to estimate losses of life and property, and shows those losses on a map.
- HAZUS-MH estimates impacts to the physical, social, and economic vitality of a community from earthquakes, hurricane, winds, and floods.
- Coastal flood risk assessments will be similar to riverine, but will use coastal depth grids as input for refined analysis.
- Hazus-MH analysis and data can support adoption of high regulatory standards for structures in high loss areas.
- Hazus-MH results can help to provide justification to find mitigation projects to protect citizens and properties from losses during future coastal flood events.



For more information about Hazus and data inputs, visit <http://www.fema.gov/hazus> or enter keywords "fema hazus" into an internet search engine.



In addition, FEMA is looking into the possibility of developing some unique Great Lakes coastal flood risk products that utilize datasets that have recently been collected or will be collected as part of the GLCFS:

- Storm Response Erosion Data: Dataset is expected to contain the results from erosion analysis in response to the 1-percent-annual chance flood event
- Shoreline Feature Data: Dataset was developed by USACE in 2012 and contains primary and secondary land use tables, as well as coastline type, materials, and vegetation. The current dataset contains data at one-mile

spacing. The dataset does not include field-based reconnaissance or sediment/subsurface soil collection.

The delivery of these standard flood risk products and the Great Lakes coastal flood risk datasets will be dependent on the location of the Risk MAP study and coastal analysis, data availability, fiscal year funding, and partnerships with local communities. Therefore, all communities may not receive flood risk products.

II. Stakeholder Communication and Coordination

Communication and coordination with federal, state and local stakeholders is key to the success of the GLCFS. A large emphasis has been placed on identifying stakeholders early and often and working with those stakeholders continually throughout the study process, from Coastal Scoping all the way through flood map and flood risk product development. Through outreach, the goal is to increase understanding of the new coastal study methodologies and the tools and processes that will be available for risk-based community planning, and to increase flood hazard awareness within the Great Lakes coastal region.

i. Lake Huron Coastal Scoping Stakeholder Coordination

Meetings, emails, telephone calls, and letters are essential to communicate effectively throughout the life of this Lake Huron Coastal Flood Study project, which has begun with this Coastal Scoping process.

To kick-off this Coastal Scoping process, FEMA formed a group of core stakeholders, which included representatives from FEMA Region V, STARR (mapping partner to FEMA), USACE, National Oceanic and Atmospheric Administration (NOAA), ASFPM, the state NFIP Coordinators, the State Hazard Mitigation Officers (SHMOs), and State Engineers. The core stakeholders reviewed the Coastal Scoping plan, objectives, and key outcomes for Lake Huron Coastal Scoping with FEMA, provided suggestions for outreach and communication, and raised any concerns as it related to Lake Huron and the coastal flood study process. Following this kick-off process, outreach, communication, and coordination with local stakeholders was initiated.

Coastal Scoping meeting letter invitations were sent to local community and county stakeholders within the Bay and Huron Counties portions of the Lake Huron Coastal Flood Study project. In addition, an email invitation was sent to a larger list of stakeholders including, but not limited to, the core stakeholders, other federal agencies, universities, watershed groups, Great Lakes associations, technical stakeholders, and emergency management agencies. Representatives from the local governments, including cities, townships, and villages, were considered fundamental stakeholders in this process because they have been elected or appointed to represent the interests of the residents of this project area.

The Coastal Scoping meeting invitations also included a Coastal Data Request Form (Attachment A). Communities were asked to provide information on data that they had available at the local level that may be of use during the flood study update and during the development of the coastal flood risk products discussed earlier in this report. The Coastal Data Request Form included data requests for:

- Base map data
- Coastal data
- Historic flood data
- Risk assessment
- Other comments/concerns based on local knowledge

No information was received prior to the Coastal Scoping meeting.

The core stakeholder documents, stakeholder contact list, and Coastal Scoping meeting invitations will be provided in Attachment B, Bay and Huron Counties Pre-Meeting Correspondence, in the Final Coastal Scoping Report.

DRAFT

III. Coastal Scoping Meeting

The Coastal Scoping Meeting for Bay and Huron Counties was held on Monday, May 5, 2014 at the City Hall in Bay City. Communities and stakeholders affected by coastal flooding in Bay and Huron Counties were invited to the Coastal Scoping meeting. The purpose of this meeting was to facilitate discussion about study needs, desired compliance support, and local flood risk awareness efforts.



The objectives of the Coastal Scoping meeting include:

- Continuation and expansion upon stakeholder engagement
- Discussion of data inputs from federal, state and local stakeholders
- Identification of local coastal flood hazard needs and areas of concern
- Identification of flood risk products and datasets
- NFIP regulatory updates
- Coastal Scoping schedule and deliverables

The Coastal Scoping meeting presentations include the following information:

- An overview of the GLCFS and schedule
- Review of the Coastal Scoping process and potential outcomes
- Discussion of coastal mapping and flood risk topics to be aware of
- Discussion of how the study may affect the communities, including compliance requirements
- Encouragement and facilitated discussion regarding coastal study needs, desired compliance support, and local flood risk awareness efforts

Draft Coastal Scoping maps for Bay and Huron Counties (Attachment C) will be displayed and utilized during the meeting to encourage the discussion regarding areas of coastal flood risk concern and areas of hazard mitigation interest. The draft Coastal Scoping maps shown at the meeting will include geospatial and tabular data that was collected prior to the meeting.

Geospatial Data:

- Average Annualized Loss (AAL) data
- Coastal Barrier Resources System (CBRS)¹
- Coordinated Needs Management Strategy (CNMS)² Data- riverine only
- Proposed transects
- Effective Special Flood Hazard Areas (SFHAs)
- Jurisdictional Boundaries
- Letters of Map Change (LOMCs)
- Levees - *None for this study area*
- Shoreline
- Streams
- U.S. Geologic Survey (USGS) Gages

Participants at the Coastal Scoping meeting will be asked to cooperatively identify areas of flooding concern using the draft Coastal Scoping maps and through general discussion during the meeting.

In addition to the draft Coastal Scoping maps, figures showing the location of initially proposed draft transects around Bay and Huron Counties will be available for review and comment immediately following the meetings. Stakeholders will be encouraged to review the proposed draft transects and provide comments related to the location of the transects. The proposed draft transect maps that will be available at the Coastal Scoping meeting for Bay and Huron Counties can be found in Attachment D. A sample map is shown as Figure 1:

¹ CBRS consists of the undeveloped coastal barriers and other areas located on the coasts of the United States that are identified and generally depicted on a series of maps. CBRS areas are ineligible for most new Federal expenditures and financial assistance.

² CNMS is FEMA's strategy for coordinating the management of mapping needs using modern geospatial technologies and current policies, requirements, and procedures. CNMS makes information related to mapping needs readily accessible and more usable. CNMS is only for riverine studies at this time. It is expected coastal needs will be captured in this system in the future.

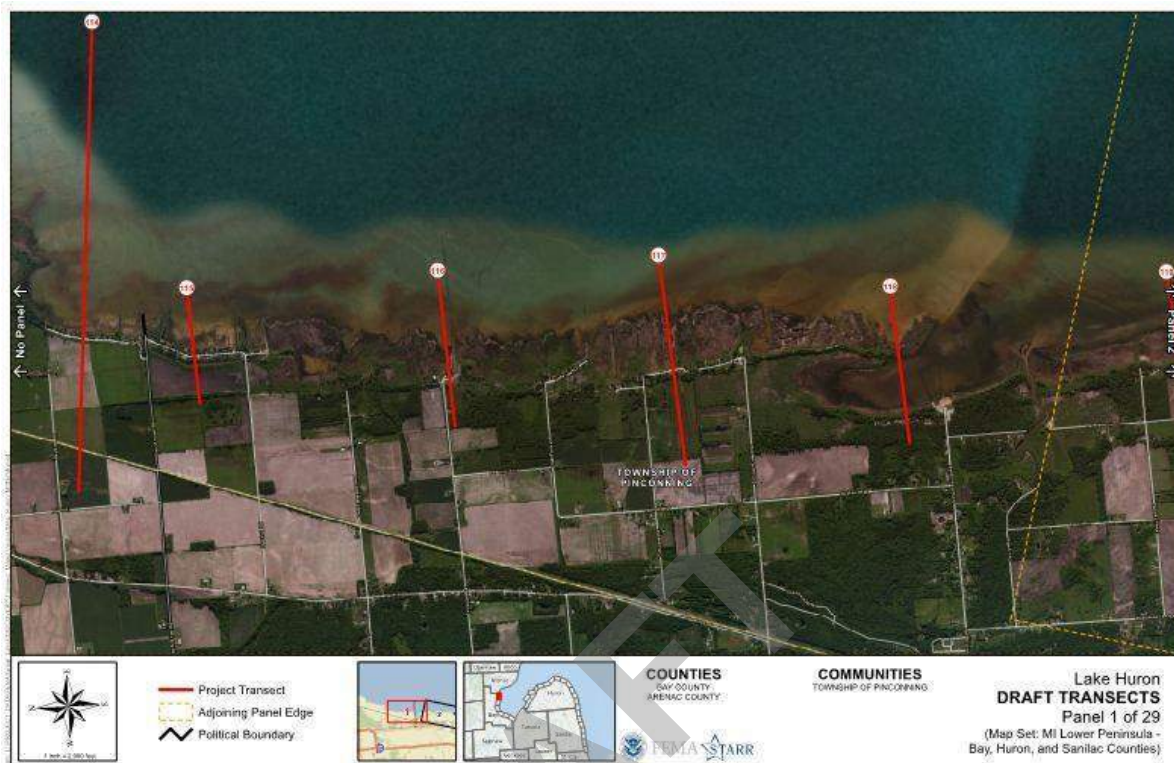


Figure 1: Sample Proposed Draft Transect Figure

❖ Additional Information will be added to this section following the Coastal Scoping meeting

IV. Summary of Data Analysis

During this Coastal Scoping portion of the Lake Huron Coastal Flood Study project, a massive collection of tabular and spatial data will be conducted for all the coastal communities from federal and state sources, as well as information collected through telephone conversations, the Coastal Scoping meeting, and the Coastal Data Request Forms sent to each coastal community. This section lists the types of data and their sources that will be collected for the Bay and Huron Counties study area, including information collected during and after the Coastal Scoping meeting. The data analysis that follows Table 1 is divided into two sections: one section listing the data that can be used for Risk MAP product development and the other section listing the information that helped the study team to form a better understanding of the Bay and Huron Counties Lake Huron Project Area prior to moving forward with the coastal flood study.

Table 1. Data Collected for Bay and Huron Counties

Data Types	Deliverable/Product	Source	Date of Data Collection	Level
AAL	Coastal Scoping Map	FEMA	1/20/2014	Nationwide
Bathymetry and Topography	Coastal Scoping Report	USACE	2012	Lakewide
Census Blocks	Coastal Scoping Map	U.S. Census Bureau	1/14/2014	Countywide
Contacts	Coastal Scoping Report	Local Community Websites, State/FEMA updates	2/19/2014	Countywide
CAVs	Coastal Scoping Report	FEMA Community Information System (CIS)	2/6/2014	Countywide
Community Rating System (CRS)	Coastal Scoping Report	FEMA's "Community Rating System Communities and Their Classes"	2/6/2014	Nationwide
CBRS	Coastal Scoping Map	U.S. Fish and Wildlife Service	1/16/2014	Nationwide
Coastal Structures	Coastal Scoping Map/Tabular Data	USACE	To be collected	Nationwide
CNMS	Coastal Scoping Map	FEMA	12/31/2013	Countywide
Critically Eroded Beach Areas	Coastal Scoping Report	Local Stakeholders	N/A	Statewide
Dams	Coastal Scoping Report	USACE, National Inventory of Dams, FIRM Database	2/19/2014	Countywide
Declared Disasters	Coastal Scoping Report	FEMA's "Disaster Declarations Summary"	1/27/2014	Nationwide
Effective Floodplains	Coastal Scoping Map	FEMA Map Service Center and Mapping Information Platform	2/19/2014	Countywide
Flood Insurance Policies	Coastal Scoping Report	FEMA CIS	2/5/2014	Nationwide
High Water Marks	Coastal Scoping Report	Effective FIS	To be collected	Countywide
Historical Flooding	Coastal Scoping	Effective FIS, Local Mitigation Plans	2/20/2014	Countywide

Table 1. Data Collected for Bay and Huron Counties

Data Types	Deliverable/Product	Source	Date of Data Collection	Level
	Report			
Historical Storm Events	Coastal Scoping Report	Effective FIS, Local Mitigation Plans	2/20/2014	Countywide
Local Data	Coastal Scoping Report	Coastal Data Request Form completed by communities	To be collected	Countywide
LOMCs	Coastal Scoping Map	FEMA's Mapping Information Platform	2/4/2014	Countywide
Meteorological Gages	Coastal Scoping Map	NOAA Great Lakes Environmental Research Laboratory	1/16/2014	Regionwide
Oblique Imagery	Coastal Scoping Report	USACE	2012	Lakewide
Ordinance Level	Coastal Scoping Report	FEMA CIS	2/6/2014	Countywide
Proposed Draft Transects	Coastal Scoping Map	FEMA	4/2/2014	Lakewide
Repetitive Loss	Coastal Scoping Report	FEMA CIS	1/24/2014	Countywide
Shoreline Classification	Coastal Scoping Map	USACE	1/29/2014	Regionwide
Stream Gages	Coastal Scoping Map	USGS	1/21/2014	Countywide
Water Level Gages	Coastal Scoping Map	NOAA Department of Fisheries and Oceans	2/5/2014	Regionwide
Wave Gages	Coastal Scoping Map	NOAA	2/5/2014	Regionwide

i. Data that can be used for future Coastal Flood Risk Products

During the Coastal Scoping process, the project team created a database of available flood hazard and flood risk assessment data. This database not only provides an inventory of available data, but helps identify gaps in the flood hazard data. State, county, and government GIS websites can provide some of the pertinent data, but local knowledge of flooding is critical to help accurately determine flood risks and mapping needs. Therefore, local and regional data were also used where available. The subsections below provide details on the data determined to be available within the project area.

I.IV.i.1 Average Annualized Loss (AAL) Data

AAL data provide a general understanding of the dollar losses associated with a certain frequency of flood events within a county and are used to get a relative comparison of flood risk. They are determined by FEMA’s Multi-Hazard Risk Assessment and Loss Estimation Program, otherwise known as Hazus-MH.

Hazus, a free risk assessment software application from FEMA, is the most widely used flood risk assessment tool available. Hazus can run different scenario floods (riverine and coastal) to determine how much damage might occur as a result. Hazus can also be used by community officials to evaluate flood damage that can occur based on new or proposed mitigation projects or future development patterns and practices, and it can run specialized risk assessments, such as what happens when a dam or levee fails.

Hazus-MH includes national datasets that can be supplemented with local data. If local detailed data are available, users may consider using these data to perform more refined Hazus analyses. Hazus-MH is flexible and allows users to update Hazus-MH with local data or use a combination of both local and national. Augmenting the Hazus-MH provided data with local data can improve the accuracy and resolution of analysis results. Additional information about the Hazus-MH process and tool can be found at <http://www.fema.gov/protecting-our-communities/hazus>.

The Hazus-MH analysis used in this report is based on approximate flood boundaries and national datasets. The calculation is based on flood elevation estimates using the 10-meter Digital Elevation Model (DEM) on streams with drainage areas of at least 10 square miles.

The results shown in Table 2 include data for the entire county, as opposed to only the coastal project area. Information can also be obtained from the report titled FEMA *Hazus AAL Usability Analysis*, dated April 13, 2011 (Federal Emergency Management Agency, 2011). AAL data summarized at the census block level are shown on the draft Coastal Scoping Maps (Attachment C).

Table 2. Hazus AAL Data for Bay and Huron Counties

FIPS Code	County	Total Losses for Building and Content (in thousands of \$)
26017	Bay	\$15,469
26063	Huron	\$8,670

Source: FEMA

FIPS = Federal Information Processing Standards

I.IV.i.2 Coastal Recession

Coastal erosion is the recession of land and the removal of beach or dune sediments. It affects all of the beaches and coasts in the world, including those of Lake Huron.

Important factors in coastal erosion are the types of rock or soil being eroded, the presence

or absence of beaches or human-made structures, and how the shore is oriented with respect to prevailing winds and waves, water levels, climatology, and groundwater and surface drainage.

- ❖ **Additional Information will be added to this section following the Coastal Scoping meeting**

I.IV.i.3 Federal Land

Federal lands data were obtained from the National Atlas at <http://nationalatlas.gov/mld/fedlanp.html>. These data are also available from the National Coastal Scoping Data Repository located on FEMA's Mapping Information Platform (MIP) at <https://hazards.fema.gov>. The map layer shows those lands owned or administered by the Federal Government, including the Bureau of Land Management, the Bureau of Reclamation, the U.S. Department of Agriculture Forest Service, the Department of Defense, the U.S. Fish and Wildlife Service, the National Park Service, and other agencies. Only areas of 640 acres or more are included.

No federal lands were found in the Bay and Huron Counties project area.

I.IV.i.4 Jurisdictional Boundaries

Bay and Huron Counties jurisdictional boundaries can also be obtained from a derived set of TIGER line files available through the U.S. Census Bureau geography division. To find out more about TIGER line files and other Census TIGER database derived data sets visit <http://www.census.gov/geo/www/tiger>.

I.IV.i.5 Local Data

As part of this Coastal Scoping process, communities were asked to fill out a Coastal Data Request Form and provide information on data that they had available at the local level that may be of use during the coastal flood study update, and during the development of the coastal flood risk products discussed earlier in this report. The Coastal Data Request Form (Attachment A) included data requests for base map data, coastal data, historic flood data, and risk assessment information.

- ❖ **This section will be completed following Coastal Scoping meetings. A compilation of the completed Coastal Data Request Forms will be provided in Attachment G in the Final Coastal Scoping Report.**

I.IV.i.6 Publicly Owned Land

No statewide geospatial coverage dataset for publicly owned lands was identified during this Coastal Scoping process.

I.IV.i.7 Shoreline Information

A shoreline feature dataset was generated by USACE Detroit District (U.S. Army Corps of Engineers, 2013) using 2012 oblique photographs (see “Topography, Bathymetry, and Oblique Imagery” subsection in this report). The dataset captures shoreline types, land uses, coverage, and vegetation types along the entire Great Lakes shoreline, including Lake Huron. The dataset includes identification of “artificial” shoreline, which may be indicative of local coastal flood protection structures. This dataset does not identify the level of protection of any coastal structures, and it does not validate whether or not a coastal structure exists. The current dataset contains data at 1-mile spacing. The dataset does not include field-based reconnaissance or sediment/subsurface soil collection. The dataset can be downloaded from <http://www.greatlakescoast.org/> under the “Technical Resources” section.

From the USACE shoreline feature dataset, the approximate shoreline along Bay and Huron Counties that is covered by this study totals 174.09 miles. The shoreline classification information for Bay and Huron Counties is summarized in Tables 3 through 6, including shoreline types, land uses, coverage, and vegetation types, respectively.

Table 3. Summary of Shoreline Types

County	Total Shoreline (mile)	Artificial Shoreline (mile)	Boulders, Bedrock (mile)	Cohesive Clays and Silts (mile)	Sand (mile)	Shingles, Pebbles, Cobbles (Mile)
Bay	46.65	27.37	-	-	19.28	-
Huron	127.44	27.36	21.13	-	50.37	28.58

Source: USACE 2013, Lake Huron Shoreline Classification

Table 4. Summary of Shoreline by Land Use

County	Total Shoreline (mile)	Commercial/Industrial (mile)	Farm Land (mile)	Forested (mile)	High Density Residential (mile)	Low Density Residential (mile)	Moderate Density Residential (mile)	Park Land (mile)
Bay	46.65	4.35	9.33	-	8.71	9.95	8.71	5.60
Huron	127.44	-	-	1.86	35.44	36.06	47.85	6.22

Source: USACE 2013, Lake Huron Shoreline Classification

Table 5. Summary of Shoreline Coverage

County	Total Shoreline (mile)	Bluff 2'-10' (mile)	Coastal Wetland (mile)	Dune 2'-10' (mile)	Flat Coast (mile)	High Bluff 10'+ (mile)	High Dune 10'+ (mile)
Bay	46.65	-	36.07	-	10.57	-	-
Huron	127.44	19.27	80.19	3.73	20.51	3.73	-

Source: USACE 2013, Lake Huron Shoreline Classification

Table 6. Summary of Shoreline Vegetation Types

County	Total Shoreline (mile)	High Density Shrubs/Trees (mile)	Low Density Shrubs/Trees (mile)	Manicured Lawn (mile)	Moderate Density Shrubs/Trees (mile)	None (mile)	Unmaintained Non-Woody Vegetation (mile)
Bay	46.65	-	-	10.57	0.62	0.62	34.83
Huron	127.44	0.62	-	39.17	4.97	1.24	81.43

Source: USACE 2012, Lake Huron Shoreline Classification

I.IV.i.8 Stream Lines/Hydrograph

Stream lines and water areas for Bay and Huron Counties were acquired from the Maps & Data section of the U.S. Census website, <http://www.census.gov/geo/maps-data/data/tiger-line.html>.

I.IV.i.9 Topography, Bathymetry, and Oblique Imagery

New Data Collected for Great Lakes Coastal Flood Study

As part of the GLCFS, Light Detection and Ranging (LiDAR) was collected to develop topographic and bathymetric data along the Lake Huron shoreline. Topography is the configuration of natural and man-made features of a surface area and their relative position and elevations. Bathymetry is the underwater equivalent to topography.

LiDAR is an optical remote sensing technology that can measure the distance to, or other properties of, a target by illuminating the target with light, often using pulses from a laser. A narrow laser beam can be used to map physical features with very high resolution. Downward-looking LiDAR instruments fitted to aircraft and satellites are used for surveying and mapping. LiDAR can be used to create Digital Terrain Models (DTM) and Digital Elevation Models (DEM), which is a digital model or 3-dimensional representation of the terrain's surface.

The LiDAR data for this study was collected within a 1500 meter buffer (500 meters inland and 1000 meters seaward of the land/water interface). Where water clarity permitted, data was collected to cover all federal navigation projects. Flight lines were flown along the channel alignment to ensure the best possible coverage of inlets and structures.

For quality control purposes, one cross line was used every 25 miles along shore or more frequently to ensure 90 percent of all planned lines within the area were crossed by a cross line. In areas of the coast where natural or artificial barriers prevent aircraft operations, the cross line(s) were collected at the nearest possible location to the required interval, but no closer than five (5) miles to an adjacent planned cross line. Overlapping lines and datasets were compared to each other and to cross lines and the differences calculated.

At the time this report was generated, the quality control process was not yet completed on the LiDAR dataset. However, as part of that process, the vertical difference between the LiDAR and ground truth data will be calculated. Ground truth refers to a process in which a pixel on a satellite image is compared to what is there in reality. This is especially important in order to relate LiDAR data to real features and materials on the ground. The collection of ground truth data enables calibration of the LiDAR data, and aids in the interpretation and analysis of what is being sensed. Using this process, all systematic errors will be identified and eliminated and remaining errors should have a normal distribution. Differences between a DEM created from the LiDAR data representing bare ground and the ground truth data will be unbiased and within +/-15 cm (RMSE³) in flat terrain and within +/-30 cm (RMSE³) in hilly terrain. Horizontal positions will be accurate to +/- 1.5m (RMSE³). Data will be processed to 2ft contours.

The processing of the bathymetric data for this study will be performed based on the strongest return of each LiDAR pulse, assuming this depth represents the bottom. Data will be processed to produce bottom reflectance data from the LiDAR data.

As part of the GLCFS, USACE collected oblique imagery for the entire Great Lakes coastline in 2012. Oblique imagery is captured at an angle, as compared to an overhead view provided by orthophotos, and allows users a 3-dimensional view of landscape, buildings, and other features. This dataset may be useful to communities during emergency response, planning, and identification of shoreline types and obstructions; and management of assets, critical facilities, and public properties along the Lake Huron shoreline. The oblique imagery is current available via a web-based browser at <http://www.greatlakes.usace.army.mil/>.

Other Data Available:

The NOAA Coastal Services Center, Digital Coast, hosts a variety of digital coastal data, including bathymetric and topographic data, and is located at <http://www.csc.noaa.gov/digitalcoast>.

❖ This section will be completed following Coastal Scoping meetings.

³ Root-mean-square-error is a measure of the differences between values predicted by a model or an estimator and the values actually observed.

I.IV.i.10 Transportation

The World Topo Map service has been used as a basemap layer on the Coastal Scoping Map, and includes a transportation layer. For more information on Environmental Systems Research Institute (ESRI) Map services and how they can be used in GIS, please visit http://goto.arcgisonline.com/maps/World_Topo_Map.

In addition, transportation data for Bay and Huron Counties were obtained from a derived set of TIGER line files available through the U.S. Census Bureau geography division. To find out more about TIGER line files and other Census TIGER database derived datasets visit <http://www.census.gov/geo/maps-data/data/tiger-line.html>.

I.IV.i.11 Watershed Boundaries

USGS Hydrologic Unit Code 8 (HUC8) watershed boundaries were obtained from the National Atlas 2011 “Raw Data Download” (<http://nationalatlas.gov/atlasftp.html>).

Bay County contains portions of three HUC-8 watersheds: Kawkawlin-Pine (04080102), Pigeon-Wiscoggin (04080103) and Saginaw (04080206).

Huron County contains portions of three HUC-8 watersheds: Pigeon-Wiscoggin (04080103), Cass (04080205, and Birch-Willow (04080104).

ii. Other Data and Information

Bay County is located in the mideastern part of Michigan approximately 85 miles north of Detroit. It is bordered by Saginaw Bay on the east, Tuscola County to the southeast, Saginaw County to the south, Midland and Gladwin Counties to the west and Arenac County to the north. Bay County has a land area of 444.25 square miles and a population of 107,771; the largest municipality in Bay County – Bay City has a population of 34,932 (U.S. Census Bureau, 2010).

Huron County is located in the mideastern part of Michigan approximately 90 miles north of Detroit. It is border by water on three sides – Saginaw Bay and Lake Huron, and Sanilac and Tuscola Counties to the south. This area is also known as the Thumb of Michigan. Huron County has a land area of 836.52 square miles and a population of 33,118 (U.S. Census Bureau, 2010).

I.IV.ii.1 Coastal Barrier Resources Systems

Coastal barriers are unique land forms that protect distinct aquatic habitats and serve as the mainland’s first line of defense against damage from coastal storms and erosion. CBRS defines a coastal barrier as a landform composed of unconsolidated shifting sand or other sedimentary material that is generally long and narrow and entirely or almost entirely surrounded by water. They are sufficiently above normal tides so that they usually have

dunes and terrestrial vegetation. The CBRS boundaries were downloaded from U.S. Fish and Wildlife Service http://www.fws.gov/CBRA/Maps/Data_Disclaimer_Shapefiles.html and are dated November, 2012.

Huron County has three 3 designated units of coastal barriers along the Lake Huron shoreline and/or within this study area.

Bay County has no units of coastal barriers along the Lake Huron shoreline and/or within this study area.

I.IV.ii.2 Coastal Flood Protection Measures

Coastal structures along Lake Huron will be reviewed in more detail during the engineering analysis portion of the Lake Huron study and will not be analyzed as part of this Coastal Scoping process. A summary of information collected regarding existing coastal structures and flood protection measures is described below; however, as discussed below, other flood protection measures do exist in Huron County.

FEMA's Midterm Levee Inventory (MLI) project compiled a database of structures that were designed to provide at least the minimum level of protection from the base flood level (1- percent-annual-chance flood). For this Coastal Scoping process, the November 2011 MLI Status Report published by FEMA was reviewed. The MLI Levee database shows no levee segments in Huron Counties study areas that provide protection from the 1-percent-annual-chance flood.

No Lake Huron flood protection measures were found in Bay County.

The USACE Coastal and Hydraulics Laboratory (CHL), a member of the Engineer Research and Development Center (ERDC), has compiled an inventory of coastal structures called the Enterprise Coastal Inventory Database (ECID). The ECID application and database houses information on more than 900 coastal structures in the U.S. and uses a Google Earth interface for users to access information on the structures including project reports, aerial photographs, wave and water level and bathymetric data. The database and application are available at <http://chl.ercd.usace.army.mil/chl.aspx?p=s&a=Projects;246> . These maintained coastal structures protect harbors and shore-based infrastructure, provide beach and shoreline stability control, provide flood protection to varying degrees, and protect coastal communities, roadways, bridges, and other structures or infrastructures. These structures include seawalls, bulkheads, revetments, dikes and levees, breakwaters, groins, sills/perched beaches, and jetties and piers.

The USACE coastal structures along Lake Huron found within Bay and Huron Counties are compiled in Table 7. It is important to note that these coastal structures do not necessarily protect areas from the 1-percent-annual-chance flood event. Many of these USACE coastal structures were built between 1860 and 1940. Low lake levels since the 1990's have accelerated deterioration of these navigation structures and USACE Detroit

District launched an investigation to assess the effects of changes in Great Lakes water levels on the performance and stability of these structures. An inventory of critical infrastructure protected by federally maintained navigation structures was conducted along with a condition assessment of the structures, including an estimation of the risk associated with structure failure. Structures were rated on the following scale:

- A – Failure Unlikely
- B – Low Risk of Failure
- C – Medium Risk of Failure
- D – High Risk of Failure
- F – Failed

Table 7 also provides the condition assessment for each of the structures listed.

Table 7. USACE Coastal Structure Inventory

State	Location	Coastal Structure	USACE Condition Assessment	Structure Length (feet)
Michigan	Huron County	Caseville Harbor Breakwater	NA	396
Michigan	Huron County	Harbor Beach Main Breakwater	NA	1437
Michigan	Huron County	Harbor Beach North Breakwater	NA	367
Michigan	Huron County	Harbor Beach South Breakwater	NA	596
Michigan	Huron County	Port Austin Harbor Breakwater	NA	587

NA = Not Available

I.IV.ii.3 Community Assisted Visits

Statewide CAVs are part of the evaluation and review process used by FEMA and local officials to ensure that each community adequately enforces local floodplain management regulations to remain in compliance with NFIP requirements. Generally, a CAV consists of a tour of the floodplain, an inspection of community permit files, and meetings with local appointed and elected officials. During a CAV, observations and investigations focus on identifying issues in various areas, such as the community’s floodplain management regulations (ordinance), community administration and enforcement procedures, engineering or other issues within the FIRMs, other problems in the community’s floodplain management, and problems with the biennial report data. Any administrative problems or potential violations identified during a CAV are documented in the CAV findings report. The community is notified and given the opportunity to correct those administrative procedures and remedy the violations to the maximum extent possible within established deadlines. The summary of CAV visits were extracted from FEMA’s CIS at <https://portal.fema.gov> in January 2014. Table 8 shows the most recent CAV date by community or jurisdiction. Not all communities within the project area were identified as having a CAV, therefore, those communities are not included in the table.

Table 8. Summary of Community Assisted Visits in Bay and Huron Counties

County	Community	CID	CAV Date	FIRM Date
Bay	Auburn, City of	260886	9/30/04	9/17/2010
Bay	Fraser, Township of	260657	08/28/01	9/17/2010
Bay	Hampton, Township of	260023	05/27/98	9/17/2010
Bay	Kawkawlin, Township of	260658	09/21/04	9/17/2010
Bay	Monitor, Township of	260358	09/19/00	9/17/2010
Bay	Pinconning, City of	260607	09/06/02	9/17/2010
Bay	Pinconning, Township of	260025	08/25/09	9/17/2010
Huron	Bloomfield, Township of	260169	09/23/03	12/2/2008
Huron	Lake, Township of	260254	02/26/03	12/2/2008
Huron	Port Austin, Township of	260290	09/21/93	12/2/2008
Huron	Rubicon, Township of	260789	09/21/93	12/2/2008
Huron	Sand Beach, Township of	260787	09/21/93	12/2/2008

CAV = Community Assisted Visit

CID= Community Identification

Source: FEMA’s CIS Summary Report

I.IV.ii.4 Community Rating System

The CRS is a voluntary incentive program to provide flood insurance premium discounts to NFIP-participating communities that take extra measures to manage floodplains above the minimum requirements. A point system is used to determine a CRS rating. The more measures a community takes to minimize or eliminate exposure to floods, the more CRS points are awarded and the higher the discount on flood insurance premiums. The list of CRS communities is available on FEMA’s Website site at

<http://www.fema.gov/library/viewRecord.do?id=3629>, which was accessed in February 2014.

Bay County has one coastal community participating in the CRS program.

Huron County has no coastal communities participating in the CRS program.

I.IV.ii.5 Coordinated Needs Management Strategy (CNMS) and NFIP Mapping Needs

During FEMA’s Flood Map Modernization program from 2003 to 2008, FEMA adhered to Procedure Memorandum No. 56 which states that, “Section 575 of the National Flood Insurance Program Reform Act of 1994 mandates that at least once every five years FEMA

assess the need to review and update all floodplain areas and flood risk zones identified, delineated, or established under Section 1360 of the National Flood Insurance Act, as amended.” This requirement was fulfilled through the Mapping Needs Assessment process. Other mechanisms such as the Mapping Needs Update Support System (MNUSS) and scoping reports were used to capture information describing conditions on the FIRMs and the potential for a map update.

FEMA’s CNMS was initiated through FEMA’s Risk MAP program in 2009 to update the way FEMA organizes, stores, and analyzes flood hazard mapping needs information for communities. CNMS defines an approach and structure for the identification and management of flood hazard mapping needs that provides support to data-driven planning and the flood map update investment process in a geospatial environment. The goal is to identify areas where existing flood maps are not up to FEMA’s mapping standards. More information about the CNMS can be found at <http://www.fema.gov/library/viewRecord.do?id=4628>.

There are three classifications within the CNMS: “Valid,” “Unverified,” and “Unknown.” New and updated studies (those with new hydrologic and hydraulic models) performed during FEMA’s Map Modernization program were automatically determined to be “Valid” and the remaining studies went through a 17-element validation process with 7 critical and 10 secondary elements. Validation elements apply physical, climatological, and environmental factors to stream studies to determine validity. A stream study has to pass all of the critical elements and at least seven secondary elements to be classified as “Valid.” The remaining streams are classified as “Unverified” or “Unknown”. Studies for which flood hazard data are identified as having critical or significant secondary change characteristics are classified as “Unverified.” Streams with a status of “Unknown” are those that have a study underway, will be evaluated in the future, or do not have sufficient information to determine whether they are “Valid” or “Unverified” (Federal Emergency Management Agency, 2013).

Table 9 summarizes the draft results of the county-wide validation analysis obtained from CNMS in December, 2013. CNMS only captures riverine studies at this time.

Table 9. CNMS Status for Bay and Huron Counties

County	FIPS	Unknown (stream miles)	Unverified (stream miles)	Valid (stream miles)	Total (stream miles)
Bay	26017	-	16.22	27.98	44.20
Huron	26063	-	-	445.05	445.05

FIPS = Federal Information Processing Standard

I.IV.ii.6 Critically Eroded Beaches and Beach Nourishment/Dune Replacement Projects

Critically eroded beaches and beach nourishment/dune replacement projects were not identified in Bay and Huron Counties at the time this report was issued, although it should be noted that all counties experience shore erosion.

❖ This section will be completed following Coastal Scoping meetings.

I.IV.ii.7 Dams

The National Inventory of Dams (NID) is a congressionally authorized database that documents dams in the United States and its territories. The current NID, published in 2010, includes information on 84,000 dams that are more than 25 feet high, hold more than 50 acre-feet of water, or are considered a significant hazard if they fail. The NID is maintained and published by USACE, in cooperation with the Association of State Dam Safety Officials, the states and territories, and federal dam-regulating agencies. The database contains information about the dams' locations, sizes, purposes, types, last inspections, regulatory facts, and other technical data. The information contained in the NID is updated approximately every 2 years. The NID is available at the USACE Website at <https://nid.usace.army.mil/>.

At the time this report was compiled, the NID identified 1 dam in Bay County and 1 dam in Huron County within the project areas.

I.IV.ii.8 Declared Disasters

The FEMA Disaster Declarations Summary is a summarized dataset describing all federally declared disasters. This information begins with the first disaster declaration in 1953 and features all three disaster declaration types: major disaster, emergency, and fire management assistance. The dataset includes declared recovery programs and geographic areas (County data not available before 1964; fire management records are considered partial because of the historical nature of the dataset).

The list of FEMA's disaster declarations is available on the FEMA Website at <http://www.fema.gov/data-feeds>. Table 10 lists the major disaster declarations that have been declared in Bay and Huron Counties.

Table 10. Declared Disasters in Bay and Huron Counties

Declared County/Area	Disaster Number	Declaration Date	Incident Type	Description
Bay (County)	190	4/14/1965	Tornado	Tornadoes and Severe Storms
Bay (County)	363	12/1/1972	Flood	Severe Storms and Flooding
Bay (County)	371	4/12/1973	Flood	Severe Storms and Flooding
Bay (County)	495	3/19/1976	Severe Storm(s)	Severe Storms, Tornadoes, Icing and Flooding
Bay (County)	744	9/18/1985	Flood	Severe Storms and Flooding
Bay (County)	774	9/18/1986	Flood	Severe Storms and Flooding
Bay (County)	1128	7/23/1996	Severe Storm(s)	Severe Storms and Flooding
Bay (County)	1226	6/24/1998	Severe Storm(s)	Severe storms
Bay (County)	3057	1/27/1978	Snow	Blizzards and Snowstorms
Bay (County)	3160	1/10/2001	Snow	Snow
Bay (County)	3225	9/7/2005	Hurricane	Hurricane Katrina Evacuation*
Huron (County)	744	9/18/1985	Flood	Severe Storms and Flooding
Huron (County)	774	9/18/1986	Flood	Severe Storms and Flooding
Huron (County)	3057	1/27/1978	Snow	Blizzards and Snowstorms
Huron (County)	3160	1/10/2001	Snow	Snow
Huron (County)	3225	9/7/2005	Hurricane	Hurricane Katrina Evacuation*

*Refers to the federal disaster aid that was made available to Michigan to supplement its efforts to assist evacuees from areas struck by Hurricane Katrina.

Additional information on disaster history can be found in the State of Michigan Hazard Mitigation Plan, at the Michigan State Police website under their Emergency Management and Homeland Security Publications page (http://www.michigan.gov/msp/0,4643,7-123-1593_3507-14743--,00.html).

I.IV.ii.9 Flood Insurance Policies

A community’s agreement to adopt and enforce floodplain management ordinances, particularly with respect to new construction, is an important element in making flood insurance available to home and business owners. For this Coastal Scoping project, data on flood insurance policies were also gathered.

Table 11 summarizes the numbers and premiums of insurance policies, the total coverage, and the numbers and dollar amounts of paid losses in communities Bay and Huron Counties. The data are based on Community Summary Reports that were extracted from FEMA’s CIS website (<https://portal.fema.gov/famsVuWeb/home>) in January 2014.

Table 11. Summary of Flood Insurance Policies and Claims for Bay and Huron Counties

County	Community	CID	No. Policies	Total Premium	Total Coverage	Number of claims since 1978	Dollar (\$) paid for claims since 1978
Bay	Auburn, City of	260886	1	\$ 460	\$350,000	0	\$ 0
Bay	Bangor, Township of	260019	458	\$407,603	\$59,164,400	181	\$508,226
Bay	Bay City, City of	260020	144	\$124,925	\$20,904,900	79	\$267,790
Bay	Bay County *	260252	0	\$ 0	\$ 0	63	\$179,194
Bay	Beaver, Township of	260357	2	\$ 923	\$333,200	0	\$ 0
Bay	Essexville, City of	260021	11	\$9,675	\$2,895,100	4	\$5,119
Bay	Fraser, Township of	260657	122	\$86,229	\$13,575,400	3	\$ 0
Bay	Hampton, Township of	260023	75	\$56,921	\$10,287,600	9	\$20,386
Bay	Kawkawlin, Township of	260658	120	\$137,516	\$19,149,700	44	\$153,192
Bay	Monitor, Township of	260358	26	\$14,017	\$5,083,600	7	\$83,037
Bay	Pinconning, City of	260607	4	\$5,430	\$1,500,000	3	\$7,318
Bay	Pinconning, Township of	260025	43	\$29,010	\$4,061,300	11	\$30,324
Huron	Caseville, Township of	260257	29	\$16,400	\$5,674,600	4	\$1,890
Huron	Caseville, Village of	260677	21	\$12,376	\$2,206,100	0	\$ 0
Huron	Dwight, Township of	260640	1	\$ 313	\$105,000	0	\$ 0
Huron	Fairhaven, Township of	260628	47	\$29,213	\$4,890,100	51	\$135,259
Huron	Gore, Township of	260785	5	\$2,782	\$612,500	0	\$ 0
Huron	Hume, Township of	260792	28	\$15,797	\$4,000,000	0	\$ 0
Huron	Huron, Township of	260415	5	\$3,524	\$848,000	1	\$ 0
Huron	Lake, Township of	260254	0	\$ 0	\$ 0	1	\$10,054
Huron	McKinley, Township of	260322	28	\$22,864	\$2,739,200	9	\$27,758
Huron	Oliver, Township of	261312	1	\$1,361	\$148,000	0	\$ 0
Huron	Port Austin, Township of	260290	5	\$5,259	\$537,600	4	\$2,833
Huron	Port Hope, Village of	260774	3	\$3,376	\$367,500	0	\$ 0
Huron	Rubicon, Township of	260789	7	\$4,222	\$1,522,800	0	\$ 0

County	Community	CID	No. Policies	Total Premium	Total Coverage	Number of claims since 1978	Dollar (\$) paid for claims since 1978
Huron	Sand beach, Township of	260787	2	\$ 926	\$413,000	1	\$ 0
Huron	Sebewaing, Township of	260860	4	\$4,602	\$706,000	0	\$ 0
Huron	Sebewaing, Village of	260572	47	\$46,588	\$4,656,900	9	\$29,486
Huron	Sherman, Township of	260788	3	\$4,722	\$509,000	0	\$ 0
Huron	Winsor, Township of	260839	3	\$3,684	\$477,000	0	\$ 0

*Community not currently participating in the NFIP

Source: FEMA's CIS Summary Report "Insurance Reports"

I.IV.ii.10 Gage Data

The NOAA Coastal Services Center, Digital Coast, hosts a variety of digital coastal data, including gage data, and is located at <http://www.csc.noaa.gov/digitalcoast>.

Meteorological Stations

The National Data Buoy Center (NDBC) is a part of the NOAA National Weather Service (NWS). NDBC designs, develops, operates, and maintains a network of data collecting buoys and coastal stations. NDBC provides hourly observations from a network of about 90 buoys and 60 Coastal Marine Automated Network (C-MAN) stations to help meet these needs. All stations measure wind speed, direction, and gust; atmospheric pressure; and air temperature. Water level is measured at selected stations. The historical and current data are available at the NDBC website <http://www.ndbc.noaa.gov/>.

Table 12 shows the meteorological station identification number and location for the gages in the Lake Huron's Bay and Huron County project areas. No stations were identified in Huron County.

Table 12. NOAA Meteorological Stations on Lake Huron near Bay and Huron Counties

County	Station ID	Location	Owner	Data	Years of Historical Data
Bay	KP58	Port Hope, MI	NWS	Meteorological Observation	NA
Bay	SBLM4	Saginaw Bay, MI	NWS	Meteorological Observation	2008-Present
Bay	45163	Saginaw Bay, MI	GLERL	Meteorological Observation	2012-Present

In addition, the Great Lakes Environmental Research Laboratory is a part of NOAA focused on the Great Lakes. It maintains multiple datasets, including a collection of meteorological data for both the United States and Canada. The datasets can be found online at <http://www.glerl.noaa.gov> .

Stream Gages

The USGS National Water Information System Web Interface <http://waterdata.usgs.gov/nwis> (accessed February 2014) provides real-time data for any given stream gage location. Table 13 below shows the gage identification numbers and locations for the gages in the study areas of Bay and Huron County. All USGS stream gage locations are shown on the draft Coastal Scoping Map.

Table 13. Stream Gage Stations for Bay and Huron Counties

Lake	State	County	Gage ID	Begin Date	End Date	Gage Location
Huron	MI	Bay	_04143500	4/1/1951	9/30/1982	North Branch Kawkawlin River near Kawkawlin, MI
Huron	MI	Huron	_04157500	10/1/1939	9/30/1954	State Drain near Sebewaing, MI
Huron	MI	Huron	_04158000	1/1/1940	9/30/1990	Columbia Drain at Gettel Road near Sebewaing, MI
Huron	MI	Huron	_04158500	10/1/1952	9/30/1982	Pigeon River near Owendale, MI
Huron	MI	Huron	_04159000	12/1/1946	9/30/1952	Pigeon River near Pigeon, MI
Huron	MI	Huron	_04159010	10/1/1986	9/30/1993	Pigeon River near Caseville, MI

Water Level Station:

NOAA’s Center for Operational Oceanographic Products and Services (CO-OPS) maintains several water level stations along Lake Huron. CO-OPS’ primary motivation is the collection and dissemination of high quality and accurate measurements of lake level for scientific studies.

Great Lakes water levels constitute one of the longest high quality hydrometeorological data sets in North America with reference gage records beginning about 1860 with sporadic records back to the early 1800's. The station information and water level data are available at NOAA CO-OPS Website:

<http://tidesandcurrents.noaa.gov/stations.html#LakeHuron>. The monthly high and low water level data from the year 1918 to 2012 at Lake Michigan and Lake Huron (which have the same water levels since they are hydraulically connected) are available at the USACE Website:

<http://www.lre.usace.army.mil/Missions/GreatLakesInformation/GreatLakesWaterLevels/HistoricalData.aspx>.

Figure 2 depicts Historic Lake Michigan-Huron Water Levels from 1918 to 2012 (U.S. Army Corps of Engineers, 2012).

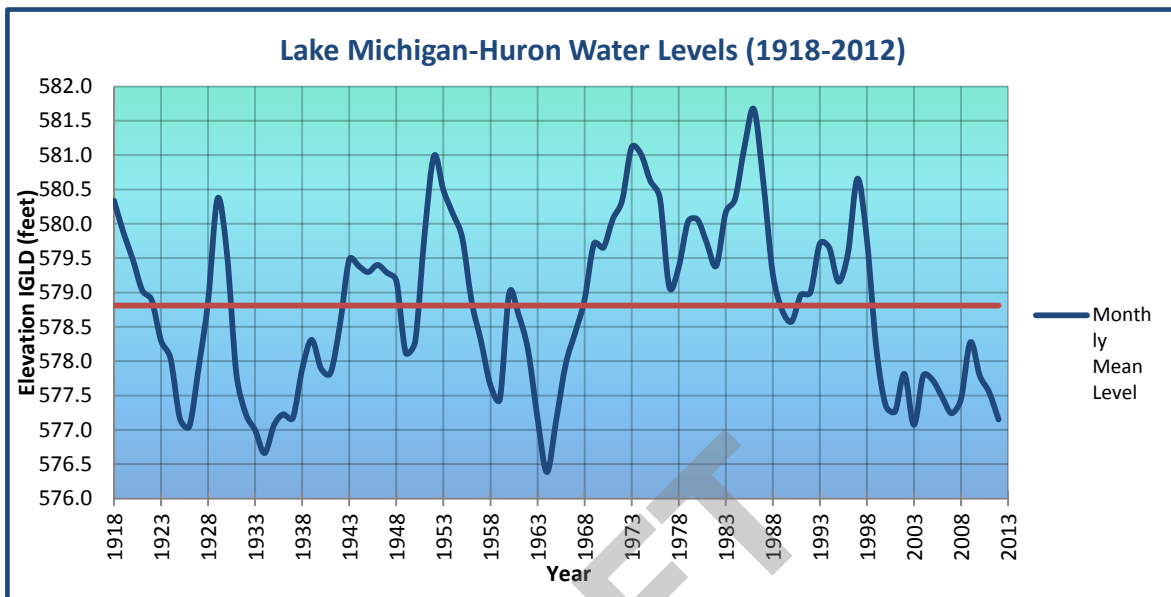


Figure 2: USACE Historic Lake Michigan-Huron Water Level Data (1918 to 2012)

The Great Lakes Water Levels Report provides daily mean water levels of Lake Huron for the past three months. The data are available at the USACE website:

<http://www.lre.usace.army.mil/Missions/GreatLakesInformation/GreatLakesWaterLevels/CurrentConditions.aspx>

Wave Gage/Buoy Stations

The NDBC is a part of the NOAA NWS. NDBC designs, develops, operates, and maintains a network of data collecting buoys and coastal stations. NDBC provides hourly observations from a network of about 90 buoys and 60 C-MAN stations to help meet these needs. In addition to standard meteorological observation, all buoy stations, and some C-MAN stations, measure sea surface temperature and wave height and period. Conductivity and water current are measured at selected stations. The historical and current data are available at NDBC website <http://www.ndbc.noaa.gov/>.

I.IV.ii.11 Historical Flooding and High Water Marks

As part of this Coastal Scoping process, effective Flood Insurance Studies (FISs) were reviewed for information on historical flooding and high water mark data. No information specific to Lake Huron flooding or high water marks (HWMs) was identified for these counties.

If local stakeholders have additional available high water mark data, historical flooding information, or historic flooding photographs they are encouraged to submit them to FEMA Region V Mitigation Division.

I.IV.ii.12 Letters of Map Change

An LOMC is a letter that reflects an official revision to an effective NFIP map. LOMCs are issued in place of the physical revision and republication of the effective FIRM. LOMCs include completed cases of Letters of Map Amendment (LOMAs) and Letters of Map Revision (LOMRs), including LOMRs based on fill (LOMR-Fs), and conditional LOMRs. The lists of LOMC cases were obtained from the FEMA Mapping Information Platform Website (<https://hazards.fema.gov/femaportal/wps/portal>) in February 2014.

Table 14 lists the number of LOMCs in the project area per county. No Conditional LOMAs or Conditional LOMR-Fs were included. The LOMCs are shown on the Coastal Scoping Maps. Clusters of LOMCs indicate a need for updated maps.

Table 14. Summary of LOMC cases in Bay and Huron Counties

County	Number of Letters of Map Amendments	Number of Letters of Map Revisions – Based on Fill	Number of Letters of Map Revisions – Floodway Removal	Number of Letters of Map Revisions
Bay	733	85	8	3
Huron	380	2	0	2

I.IV.ii.13 Ordinance Level

Local regulations regarding development within known flood hazard areas can range from ordinances with minimum NFIP requirements to strong, pro-active ordinances that not only regulate and protect new and improved development in existing SFHAs but also seek to mitigate the growth of SFHAs caused by increased runoff from developed areas and the degradation of natural flood control areas, such as wetlands and forests.

Title 44 of the Code of Federal Regulations Sections 60.3(a)–(e) describes the NFIP floodplain ordinance levels and provides the minimum requirements for community participation in the NFIP. The proper ordinance level for each community is determined by the type of flooding that is present within the community.

Ordinance levels are shown in the table below:

<u>Ordinance Level</u>	<u>Description</u>
A	Floodplains have not been identified
B	Floodplains with no base flood elevations (BFEs)
C	Floodplains with BFEs or coastal flooding with no high-hazard areas (Zone V)
D	Floodplains with BFEs and floodways
E	Coastal high-hazard areas identified, but no floodways
D & E	Both floodways and coastal high-hazard areas

Table 15. Program Status and Ordinance Level

County	Community	CID	Program Status	Ordinance Level
Bay	Bangor, Township of	260019	PARTICIPATING	D
Bay	Bay City, City of	260020	PARTICIPATING	D
Bay	Essexville, City of	260021	PARTICIPATING	D
Bay	Hampton, Township of	260023	PARTICIPATING	D
Bay	Pinconning, Township of	260025	PARTICIPATING	D
Bay	Bay County *	260252	NOT A NFIP COMMUNITY	NA*
Bay	Monitor, Township of	260358	PARTICIPATING	D
Bay	Pinconning, City of	260607	PARTICIPATING	D
Bay	Fraser, Township of	260657	PARTICIPATING	D
Bay	Kawkawlin, Township of	260658	PARTICIPATING	D
Huron	Lake, Township of	260254	PARTICIPATING	C
Huron	Caseville, Township of	260257	PARTICIPATING	B
Huron	Port Austin, Township of	260290	PARTICIPATING	B
Huron	Mckinley, Township of	260322	PARTICIPATING	C
Huron	Huron, Township of	260415	PARTICIPATING	C
Huron	Harbor Beach, City of	260570	PARTICIPATING	C
Huron	Sebewaing, Village of	260572	PARTICIPATING	D
Huron	Pte. Aux Barques, Township of	260617	NOT PARTICIPATING	NA*
Huron	Port Austin, Village of	260618	PARTICIPATING	C
Huron	Fairhaven, Township of	260628	PARTICIPATING	C
Huron	Dwight, Township of	260640	PARTICIPATING	B
Huron	Caseville, Village of	260677	PARTICIPATING	C
Huron	Port hope, Village of	260774	PARTICIPATING	C
Huron	Gore, Township of	260785	PARTICIPATING	NA*

County	Community	CID	Program Status	Ordinance Level
Huron	Sand beach, Township of	260787	PARTICIPATING	C
Huron	Sherman, Township of	260788	PARTICIPATING	C
Huron	Rubicon, Township of	260789	PARTICIPATING	C
Huron	Hume, Township of	260792	PARTICIPATING	C
Huron	Bloomfield, Township of	260834	PARTICIPATING	B
Huron	Winsor, Township of	260839	PARTICIPATING	B
Huron	Sebewaing, Township of	260860	PARTICIPATING	D
Huron	Oliver, Township of	261312	PARTICIPATING	B

*Not provided within FEMA's Community Information System

I.IV.ii.14 Proposed Draft Transects

Transects are profiles along which coastal flooding analysis is performed. Transects are used to transform offshore conditions to the shoreline and are used to define coastal flood risks inland of the shoreline. They are placed to define representative profiles for a shoreline reach. The transect layout for coastal hazards analysis and subsequent floodplain delineation is determined by physical factors such as changes in topography, bathymetry, shoreline orientation, and land cover data, in addition to societal factors such as variations in development and density. The base maps listed earlier in this section (i.e. LiDAR, bathymetry) were reviewed, or will be reviewed once available, to determine revisions to the draft placement for hazard modeling transects along the Lake Huron shoreline.

The originally proposed draft transect layout is shown on the draft Coastal Scoping Map for Bay and Huron Counties (Attachment C). During the Coastal Scoping meeting, input will be solicited regarding transect locations. The current transect layout includes an identification number per transect. Note that these identification numbers will change as the draft transects are revised in the future.

- ❖ This section and the transect map shown in attachment C will be updated following the Coastal Scoping meeting.

I.IV.ii.15 Regulatory Mapping

The effective mapping status for communities in the Bay and Huron Counties project area is listed in Table 16.

Table 16. Effective Mapping Status

County	Community	CID	FIRM Date	Program Status
Bay	Bangor, Township of	260019	9/17/2010	Participating
Bay	Bay City, City of	260020	9/17/2010	Participating
Bay	Essexville, City of	260021	9/17/2010	Participating
Bay	Fraser, Township of	260657	9/17/2010	Participating
Bay	Hampton, Township of	260023	9/17/2010	Participating
Bay	Kawkawlin, Township of	260658	9/17/2010	Participating
Bay	Monitor, Township of	260358	9/17/2010	Participating
Bay	Pinconning, City of	260607	9/17/2010	Participating
Bay	Pinconning, Township of	260025	9/17/2010	Participating
Huron	Bloomfield, Township of	260834	12/2/2008	Participating
Huron	Caseville, Township of	260257	12/2/2008	Participating
Huron	Caseville, Village of	260677	12/2/2008	Participating
Huron	Dwight, Township of	260640	12/2/2008	Participating
Huron	Gore, Township of	260785	12/2/2008	Participating
Huron	Harbor Beach, City of	260570	12/2/2008	Participating
Huron	Hume, Township of	260792	12/2/2008	Participating
Huron	Huron, Township of	260415	12/2/2008	Participating
Huron	Lake, Township of	260254	12/2/2008	Participating
Huron	McKinley, Township of	260322	12/2/2008	Participating
Huron	Port Austin, Township of	260290	12/2/2008	Participating
Huron	Port Austin, Village of	260618	12/2/2008	Participating
Huron	Port Hope, Village of	260774	12/2/2008	Participating
Huron	Pte. Aux Barques, Township of	260617	12/2/2008	Not participating
Huron	Rubicon, Township of	260789	12/2/2008	Participating
Huron	Sand beach, Township of	260787	12/2/2008	Participating
Huron	Sebewaing, Township of	260860	12/2/2008	Participating
Huron	Sebewaing, Village of	260572	12/2/2008	Participating
Huron	Sherman, Township of	260788	12/2/2008	Participating
Huron	Winsor, Township of	260839	12/2/2008	Participating

Effective FIRMs and FISs can be downloaded from FEMA’s Map Service Center (MSC) at <https://msc.fema.gov>.

I.IV.ii.16 Repetitive Loss

A Repetitive Loss (RL) property is any insurable building for which two or more claims of more than \$1,000 were paid by the NFIP within any rolling ten-year period, since 1978. A RL property may or may not be currently insured by the NFIP. There are currently over 122,000 repetitive loss properties nationwide.

Structures that flood frequently strain the National Flood Insurance Fund. In fact, the RL properties are the biggest draw on the Fund. FEMA has paid almost \$3.5 billion dollars in claims for RL properties. RL properties not only increase the NFIPs annual losses and the need for borrowing funds from Congress, they drain funds needed to prepare for catastrophic events. Community leaders and residents are also concerned with the RL problem because residents' lives are disrupted and may be threatened by the continual flooding.

Over the years, there have been a number of efforts aimed at addressing repetitive losses. Depending on individual circumstances, appropriate mitigation measures commonly include elevating buildings above the level of the base flood, demolishing buildings, and removing buildings from the SFHA as part of a flood control project. Sometimes, mitigation takes the form of a local drainage-improvement project that meets NFIP standards and removes a property or properties from RL or Repetitive Loss Target Group (RLTG) status.

Repetitive losses were reviewed in FEMA’s CIS “Community Disaster Detail – Flood Insurance” report. Table 17 details the total number of repetitive loss structures and total amount of repetitive loss payments in Bay, Huron, and Sanilac County project area communities.

Table 17. Repetitive Loss

County	Community	CID	Total Repetitive Loss Structures	Total Repetitive Loss Payment (\$)
Bay	Bangor, Township of	260019	17	\$193,278
Bay	Bay City, City of	260020	4	\$33,659
Bay	Essexville, City of	260021	0	-
Bay	Fraser, Township of	260657	0	-
Bay	Hampton, Township of	260023	0	-
Bay	Kawkawlin, Township of	260658	6	\$54,995
Bay	Monitor, Township of	260358	0	-
Bay	Pinconning, City of	260607	0	-
Bay	Pinconning, Township of	260025	1	\$6,153
Huron	Bloomfield, Township of	260834	0	-
Huron	Caseville, Township of	260257	0	-
Huron	Caseville, Village of	260677	0	-
Huron	Dwight, Township of	260640	0	-
Huron	Fairhaven, Township of	260628	5	\$88,767
Huron	Gore, Township of	260785	0	-
Huron	Harbor Beach, City of	260570	0	-
Huron	Hume, Township of	260792	1	\$2,087

County	Community	CID	Total Repetitive Loss Structures	Total Repetitive Loss Payment (\$)
Huron	Huron, Township of	260415	0	-
Huron	Lake, Township of	260254	0	-
Huron	McKinley, Township of	260322	0	-
Huron	Port Austin, Township of	260290	0	-
Huron	Port Austin, Village of	260618	0	-
Huron	Port Hope, Village of	260774	0	-
Huron	Rubicon, Township of	260789	0	-
Huron	Sand Beach, Township of	260787	0	-
Huron	Sebewaing, Township of	260572	0	-
Huron	Sebewaing, Village of	260860	0	-
Huron	Sherman, Township of	260788	0	-
Huron	Winsor, Township of	260839	0	-

I.IV.ii.17 State-level Data Sets, Programs, and Information

The information in this section was compiled by the project team throughout this Coastal Scoping process based on research of the project area and discussions with local and regional stakeholders.

❖ This section will be completed following the Coastal Scoping meeting

V. Risk MAP Projects and Needs

This section provides information about the planned next steps for the Lake Huron GLCFS, including information about the upcoming coastal analysis, potential for mitigation technical assistance within the project area, potential for changes in compliance as a result of the coastal flood study, future communications, and how unmet needs will be addressed.

i. Future Coastal Study

Information and data collected as part of this Coastal Scoping effort and provided in this report will be utilized in the upcoming coastal flood study for Lake Huron.

A summary of the GLCFS project, as well as project updates, can be found at <http://www.greatlakescoast.org/> under the “Great Lakes Coastal Analysis & Mapping” section.

❖ This section will be completed following the Coastal Scoping meeting

ii. **Potential for Mitigation Assistance**

As part of a Risk MAP project, Mitigation Planning Technical Assistance (MPTA) may be available to help communities plan for and reduce risks by providing communities with specialized assistance. MPTA includes risk assessment, mitigation planning, and traditional hazard identification (flood mapping) activities. Technical assistance through MPTA can be performed at any time during the hazard mitigation planning process.

Determining which communities receive MPTA is dependent on identification of a need, the willingness of a community to partner with FEMA, local resources and data availability, and federal funding availability. Unfortunately, not every community will be able to receive MPTA as part of a Risk MAP project. Forming a partnership between FEMA and a local community is an essential part of initiating a MPTA project. Assistance will be prioritized after all data and information is collected and assessed by FEMA in coordination with the local communities to determine where MPTA resources would be beneficial. Communities should alert FEMA of any resources that are available at the local level, and of actions they are interested in implementing in partnership with FEMA. Technical assistance activities should be based on the needs of the community and assist with already established capabilities.

Some technical assistance activities could include (but are not limited to):

- Advising in the creation of initial Hazard Mitigation Plans
- Advising in the update of existing Hazard Mitigation Plans
- Training to improve a community's capabilities for reducing risk
- Assistance in incorporating flood risk datasets and products into potential and effective community legislation, guidance, regulations, and procedures
- Assistance with the creation, acquisition and incorporation of GIS data into potential and effective maps, planning mechanisms, and emergency management procedures
- Facilitating the identification of data gaps and interpreting technical data to identify risk reduction deficiencies that should be corrected.

Additional discussions will occur between FEMA and local stakeholders as this coastal flood study moves forward to see if MPTA would be an appropriate and beneficial option.

iii. **Compliance**

FEMA uses a number of tools to determine a community's compliance with the minimum regulations of the NFIP. Among them are Community Assisted Contacts (CACs), CAVs, LOMC process, and Submit-for-Rates. These tools help assess a community's implementation of their flood damage reduction regulations and identify any floodplain management deficiencies and violations.

If administrative problems or potential violations are identified, the community will be notified and given the opportunity to correct those administrative procedures and remedy

the violations to the maximum extent possible within established deadlines. FEMA or the state will work with the community to help them bring their program into compliance with NFIP requirements. In extreme cases where the community does not take action to bring itself into compliance, FEMA may initiate an enforcement action against the community.

After coastal analysis is completed for this study, communities may be faced with adopting new regulations related to coastal high hazard areas. An understanding of regulations associated with coastal areas will be important so that communities remain compliant. During this Coastal Scoping process, stakeholders were provided with information regarding NFIP requirements that are associated with coastal hazard zones, as well as information about new FEMA guidance related to moderate wave action.

These compliance topics, including coastal SFHAs, building requirements in VE Zones, and Limit of Moderate Wave Action (LiMWA), are discussed in detail at <http://www.greatlakescoast.org>.

iv. **Communication**

Throughout this Coastal Scoping process, community representatives and local stakeholders indicated the need to be kept informed about the results of Coastal Scoping, the upcoming coastal flood study, and opportunities for public input throughout the study process.

Throughout this study process, federal, state, and local stakeholders will be kept informed via email, telephone calls, letters, newsletters, and meetings as appropriate. A dedicated email account was created (GreatLakesFloodStudy@STARR-Team.com) to distribute project information, meeting reminders, and summaries.

Stakeholder involvement will continue to be important through the remainder of the project. The GLCFS website <http://www.greatlakescoast.org> is an excellent resource where stakeholders can obtain the most up-to-date information about the status of the Great Lakes flood study projects, data collection, upcoming meetings, new technical reports, the latest methodologies, factsheets, and additional information.

FEMA encourages stakeholders to remain involved throughout the study process and will seek to identify partnership opportunities during the study process.

v. **Unmet Needs**

❖ This section will be completed following the Coastal Scoping meeting.

VI. Close

❖ This section will be completed following the Coastal Scoping meeting.

VII. References

- Federal Emergency Management Agency. (2011). *Public Owned Land*. Retrieved July 2012, from Mapping Information Platform:
<https://hazards.fema.gov/femaportal/wps/portal>
- Federal Emergency Management Agency. (2012, May). *FEMA Great Lakes Coastal Guidelines, Appendix D.3 Update DRAFT*. Retrieved September 2012, from FEMA: <http://www.fema.gov/library/viewRecord.do?id=5912>
- Federal Emergency Management Agency. (2012a). *Coordinated Needs Management System*. Retrieved June 2012, from <http://cnms.riskmapcds.com/HelpCNMS.html>
- Federal Emergency Management Agency. (May 2012). *Mitigation Planning Report with Transmittal Memo*.
- Federal Emergency Management Agency. (2003). *Guidelines and Specifications for Flood Hazard Mapping Partners*.
- Federal Emergency Management Agency. (2011). *HAZUS Flood Average Annualized Loss Usability Analysis*.
- Federal Emergency Management Agency. (2013). *Coordinated Needs Management Strategy*. Retrieved July 2012, from Coordinated Needs Management Strategy:
<http://cnms.riskmapcds.com/HelpCNMS.html>
- Great Lakes Information Network*. (2012, October). Retrieved October 4, 2012, from Great Lakes Information Network: <http://www.great-lakes.net/lakes/ref/michfact.html>
- Michigan Department of State Police, Emergency Management and Homeland Security Division. (2011). *Michigan Hazard Mitigation Plan*.
- Midwestern Regional Climate Center. (2000). *Climate of the Midwest, 1971-2000*. Retrieved March 31, 2012, from Midwestern Regional Climate Center:
<http://mcc.sws.uiuc.edu/>

- National Oceanic & Atmospheric Administration. (2009). *Ocean and Great Lakes Jobs Snapshot*. Retrieved August 2012, from Coastal County Snapshots: www.csc.noaa.gov/snapshots/
- U.S. Army Corps of Engineers. (2004). *Management Plan*.
- U.S. Army Corps of Engineers. (1989). *After Action Report: Flood Response, Advance Measures, and Other Activities as a Result of Record Great Lakes Water Levels, March 1985 through April 1989*. Detroit: Buffalo District, Chicago District, Detroit District.
- U.S. Army Corps of Engineers. (2012, March 23). *Historic Data*. Retrieved August 2012, from U.S. Army Corps of Engineers - Detroit District: <http://www.lre.usace.army.mil/greatlakes/hh/greatlakeswaterlevels/historicdata/>
- U.S. Census Bureau. (2010). *State and County Quick Facts*. Retrieved July 30, 2012, from <http://quickfacts.census.gov>
- U.S. Environmental Protection Agency. (2012, June 25). *Great Lakes*. Retrieved September 2012, from U.S. Environmental Protection Agency: <http://www.epa.gov/glnpo/atlas/gl-fact1.html>
- U.S. Environmental Protection Agency. (2012). *Great Lakes Factsheet No. 1 Physical Features and Population*. Retrieved October 12, 2012, from The Great Lakes: An Environmental Atlas and Resource Book: <http://www.epa.gov/glnpo/atlas/gl-fact1.html>

VIII. Attachments

Coastal Scoping data and information, as well as this report and attachments, have been stored digitally on FEMA's MIP Coastal Scoping Data Repository at J:\FEMA\COASTAL SCOPING_DATA_REPOSITORY\R05_DATA\ and can be accessed by FEMA authorized users. The MIP can be accessed from <https://hazards.fema.gov/>. A username and password is required to access certain data within the MIP.

The final Coastal Scoping report and attachments will also be available for download from <http://www.greatlakescoast.org/>.

Attachments in this report include:

Attachment A. Coastal Data Request Form (sample)

Attachment C. Draft Coastal Scoping Maps

Attachment D. Proposed Draft Transect Figures

The following attachments will be developed after the Coastal Scoping meeting and provided in the Final Coastal Scoping Report:

Attachment B. Bay and Huron Counties Pre-Meeting Correspondence

Attachment E. Stakeholder Comments from Coastal Scoping Meeting

Attachment F. Bay and Huron Counties Coastal Scoping Meeting Documents

Attachment G. Coastal Data Request Form Compilation

Attachment A
Coastal Data Request Form (sample)



Community Coastal Data Request Form

Thank you for taking the time to complete this questionnaire. We are interested in obtaining coastal-specific data for your community. It will provide important information to help FEMA understand coastal flood risk issues in your community and to work with you in increasing your community's resilience to coastal flooding through implementation of the Risk MAP program. In addition, this form can be used as a way to prepare for the upcoming Community Meeting, as the topics on this form will be discussed throughout the meeting.

Once you have completed the questionnaire, please return the form:

Via e-mail: GreatLakesFloodStudy@starr-team.com
By mail: Amol Daxikar, CDM, 50 Hampshire Street, Cambridge, MA 02139
E-mail: Amol.Daxikar@starr-team.com
Phone: (617) 452-6386

Please provide as much information as possible. If you have any questions about the Scoping process or about completing this questionnaire, please contact:

Amol Daxikar

Contact Information	
Community/Organization	
Name:	
Title:	
Address:	
E-mail:	
Phone:	



Contact Preference	<input type="checkbox"/> Email	<input type="checkbox"/> Phone	<input type="checkbox"/> Mail
--------------------	--------------------------------	--------------------------------	-------------------------------

Please check off the types of data you will provide by June 15, 2014

Base Map Data		<i>Please select available data type</i>	
<input type="checkbox"/>	Topography (e.g., LiDAR or contour data)	<input type="checkbox"/> <i>Hard copy</i>	<input type="checkbox"/> <i>Digital</i>
<input type="checkbox"/>	Property information (e.g., Building footprints, parcel data, tax assessor's data)	<input type="checkbox"/> <i>Hard copy</i>	<input type="checkbox"/> <i>Digital</i>
<input type="checkbox"/>	Land Use	<input type="checkbox"/> <i>Hard copy</i>	<input type="checkbox"/> <i>Digital</i>
<input type="checkbox"/>	Vegetation Type	<input type="checkbox"/> <i>Hard copy</i>	<input type="checkbox"/> <i>Digital</i>
Coastal Data			
<input type="checkbox"/>	Coastal structures (e.g., seawalls, levees, jetties, groins, etc.)	<input type="checkbox"/> <i>Hard copy</i>	<input type="checkbox"/> <i>Digital</i>
<input type="checkbox"/>	Coastal features (i.e., dunes and bluffs)	<input type="checkbox"/> <i>Hard copy</i>	<input type="checkbox"/> <i>Digital</i>
<input type="checkbox"/>	Shoreline change data	<input type="checkbox"/> <i>Hard copy</i>	<input type="checkbox"/> <i>Digital</i>
<input type="checkbox"/>	Locations of beach nourishment or dune restoration projects	<input type="checkbox"/> <i>Hard copy</i>	<input type="checkbox"/> <i>Digital</i>
<input type="checkbox"/>	Areas of significant beach or dune erosion	<input type="checkbox"/> <i>Hard copy</i>	<input type="checkbox"/> <i>Digital</i>
<input type="checkbox"/>	Mean high water	<input type="checkbox"/> <i>Hard copy</i>	<input type="checkbox"/> <i>Digital</i>
<input type="checkbox"/>	Mean lake level	<input type="checkbox"/> <i>Hard copy</i>	<input type="checkbox"/> <i>Digital</i>
<input type="checkbox"/>	Anecdotal or historical wave height information		
Other Data			
<input type="checkbox"/>	Hydraulic structures (e.g., bridges, culverts, levees, dams) with inspection status, if available	<input type="checkbox"/> <i>Hard copy</i>	<input type="checkbox"/> <i>Digital</i>
<input type="checkbox"/>	Elevated roads	<input type="checkbox"/> <i>Hard copy</i>	<input type="checkbox"/> <i>Digital</i>
<input type="checkbox"/>	Critical facilities	<input type="checkbox"/> <i>Hard copy</i>	<input type="checkbox"/> <i>Digital</i>
<input type="checkbox"/>	Other relevant data	<input type="checkbox"/> <i>Hard copy</i>	<input type="checkbox"/> <i>Digital</i>



Please provide the following information about the community:

<i>Historical Flood Data</i>		
Are you aware of any coastal flooding issues not represented on effective FIRMs:	<input type="checkbox"/> yes <input type="checkbox"/> no	If yes, please explain and provide inundation areas of historic flooding events if available.
<i>Risk Assessment</i>		
Does your community have HAZUS-based loss estimates from average annualized loss?	<input type="checkbox"/> yes <input type="checkbox"/> no	If yes, please describe:
Does your community have other risk assessment data?	<input type="checkbox"/> yes <input type="checkbox"/> no	If yes, please describe:



<p>Does your community have areas of recent or planned development/re-development and areas of high growth or other natural land changes (e.g., wildfires or landslides):</p>	<p><input type="checkbox"/> yes <input type="checkbox"/> no</p>	<p>If yes, please describe:</p>
<p>Are there any locations of other ongoing studies or projects and studied areas that have been modified since the effective map and require an updated study (e.g., highway improvement, seawall improvement, etc.)</p>	<p><input type="checkbox"/> yes <input type="checkbox"/> no</p>	<p>If yes, please describe:</p>
<p>Any other comments/concerns based on local knowledge:</p>		

Attachment C
Draft Coastal Scoping Maps

Attachment D
Proposed Draft Transect Figures

Attachment A
Coastal Data Request Form (sample)



Community Coastal Data Request Form

Thank you for taking the time to complete this questionnaire. We are interested in obtaining coastal-specific data for your community. It will provide important information to help FEMA understand coastal flood risk issues in your community and to work with you in increasing your community's resilience to coastal flooding through implementation of the Risk MAP program. In addition, this form can be used as a way to prepare for the upcoming Community Meeting, as the topics on this form will be discussed throughout the meeting.

Once you have completed the questionnaire, please return the form:

Via e-mail: GreatLakesFloodStudy@starr-team.com
By mail: Amol Daxikar, CDM, 50 Hampshire Street, Cambridge, MA 02139
E-mail: Amol.Daxikar@starr-team.com
Phone: (617) 452-6386

Please provide as much information as possible. If you have any questions about the Scoping process or about completing this questionnaire, please contact:

Amol Daxikar

Contact Information	
Community/Organization	
Name:	
Title:	
Address:	
E-mail:	
Phone:	



Contact Preference	<input type="checkbox"/> Email	<input type="checkbox"/> Phone	<input type="checkbox"/> Mail
--------------------	--------------------------------	--------------------------------	-------------------------------

Please check off the types of data you will provide by June 15, 2014

Base Map Data		<i>Please select available data type</i>	
<input type="checkbox"/>	Topography (e.g., LiDAR or contour data)	<input type="checkbox"/> <i>Hard copy</i>	<input type="checkbox"/> <i>Digital</i>
<input type="checkbox"/>	Property information (e.g., Building footprints, parcel data, tax assessor's data)	<input type="checkbox"/> <i>Hard copy</i>	<input type="checkbox"/> <i>Digital</i>
<input type="checkbox"/>	Land Use	<input type="checkbox"/> <i>Hard copy</i>	<input type="checkbox"/> <i>Digital</i>
<input type="checkbox"/>	Vegetation Type	<input type="checkbox"/> <i>Hard copy</i>	<input type="checkbox"/> <i>Digital</i>
Coastal Data			
<input type="checkbox"/>	Coastal structures (e.g., seawalls, levees, jetties, groins, etc.)	<input type="checkbox"/> <i>Hard copy</i>	<input type="checkbox"/> <i>Digital</i>
<input type="checkbox"/>	Coastal features (i.e., dunes and bluffs)	<input type="checkbox"/> <i>Hard copy</i>	<input type="checkbox"/> <i>Digital</i>
<input type="checkbox"/>	Shoreline change data	<input type="checkbox"/> <i>Hard copy</i>	<input type="checkbox"/> <i>Digital</i>
<input type="checkbox"/>	Locations of beach nourishment or dune restoration projects	<input type="checkbox"/> <i>Hard copy</i>	<input type="checkbox"/> <i>Digital</i>
<input type="checkbox"/>	Areas of significant beach or dune erosion	<input type="checkbox"/> <i>Hard copy</i>	<input type="checkbox"/> <i>Digital</i>
<input type="checkbox"/>	Mean high water	<input type="checkbox"/> <i>Hard copy</i>	<input type="checkbox"/> <i>Digital</i>
<input type="checkbox"/>	Mean lake level	<input type="checkbox"/> <i>Hard copy</i>	<input type="checkbox"/> <i>Digital</i>
<input type="checkbox"/>	Anecdotal or historical wave height information		
Other Data			
<input type="checkbox"/>	Hydraulic structures (e.g., bridges, culverts, levees, dams) with inspection status, if available	<input type="checkbox"/> <i>Hard copy</i>	<input type="checkbox"/> <i>Digital</i>
<input type="checkbox"/>	Elevated roads	<input type="checkbox"/> <i>Hard copy</i>	<input type="checkbox"/> <i>Digital</i>
<input type="checkbox"/>	Critical facilities	<input type="checkbox"/> <i>Hard copy</i>	<input type="checkbox"/> <i>Digital</i>
<input type="checkbox"/>	Other relevant data	<input type="checkbox"/> <i>Hard copy</i>	<input type="checkbox"/> <i>Digital</i>



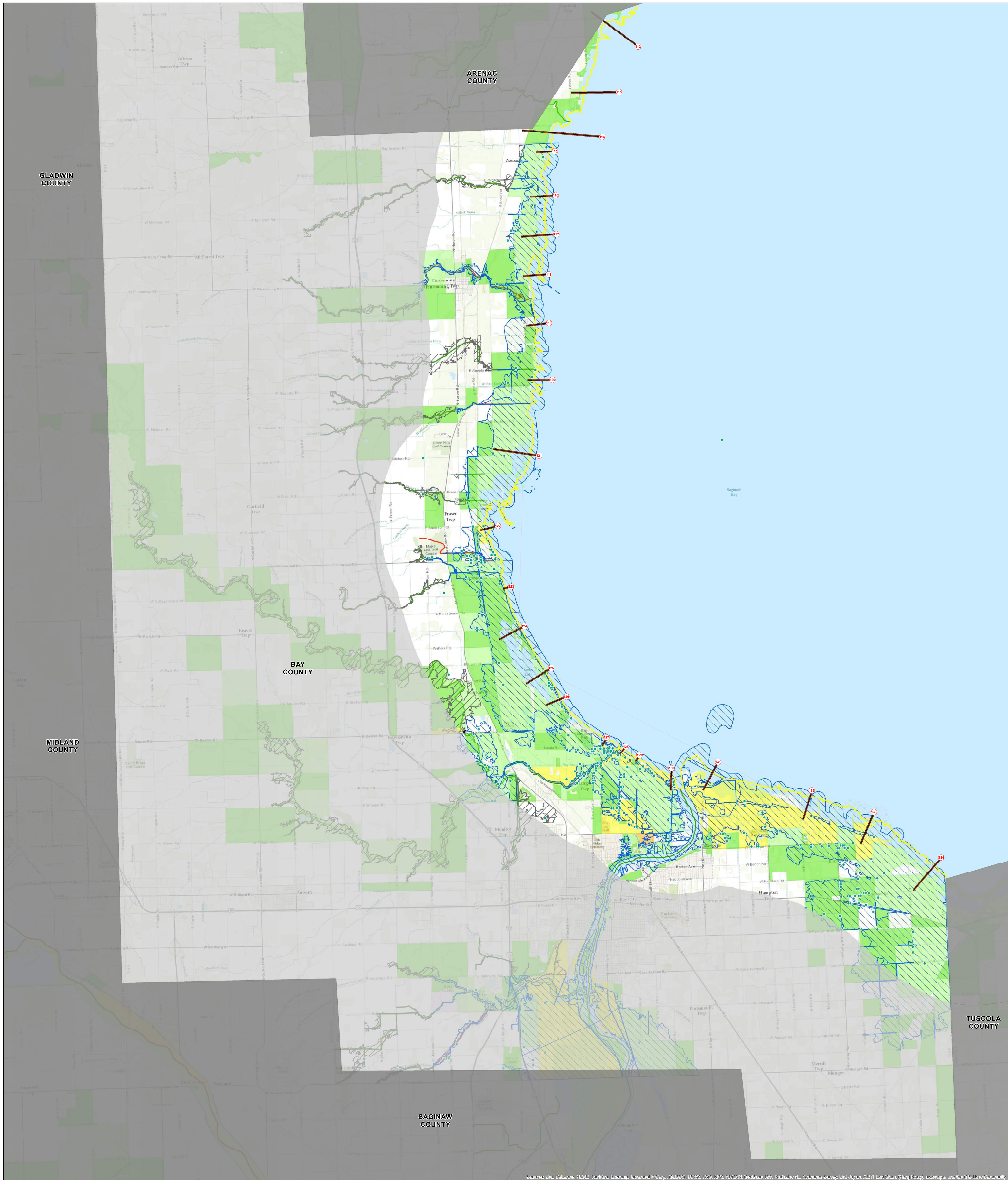
Please provide the following information about the community:

<i>Historical Flood Data</i>		
Are you aware of any coastal flooding issues not represented on effective FIRMs:	<input type="checkbox"/> yes <input type="checkbox"/> no	If yes, please explain and provide inundation areas of historic flooding events if available.
<i>Risk Assessment</i>		
Does your community have HAZUS-based loss estimates from average annualized loss?	<input type="checkbox"/> yes <input type="checkbox"/> no	If yes, please describe:
Does your community have other risk assessment data?	<input type="checkbox"/> yes <input type="checkbox"/> no	If yes, please describe:



<p>Does your community have areas of recent or planned development/re-development and areas of high growth or other natural land changes (e.g., wildfires or landslides):</p>	<p><input type="checkbox"/> yes <input type="checkbox"/> no</p>	<p>If yes, please describe:</p>
<p>Are there any locations of other ongoing studies or projects and studied areas that have been modified since the effective map and require an updated study (e.g., highway improvement, seawall improvement, etc.)</p>	<p><input type="checkbox"/> yes <input type="checkbox"/> no</p>	<p>If yes, please describe:</p>
<p>Any other comments/concerns based on local knowledge:</p>		

Attachment C
Draft Coastal Scoping Maps



MAP SYMOLOGY

LEGEND

Transects	Effective Flood Hazard Areas	Coordinated Needs Management Strategy
Shoreline	ZONE A	Unverified
Dams	ZONE AE	Unknown
USGS Gages	0.2% ANNUAL CHANCE FLOOD	Valid
Letters of Map Change	AAL Data	
Coastal Barrier Resource System	Less than \$10,000	
	\$10,001 - \$100,000	
	\$100,001 - \$1,000,000	
	\$1,000,001 - \$5,000,000	
	Greater than \$5,000,000	

0 1.25 2.5 5 Miles

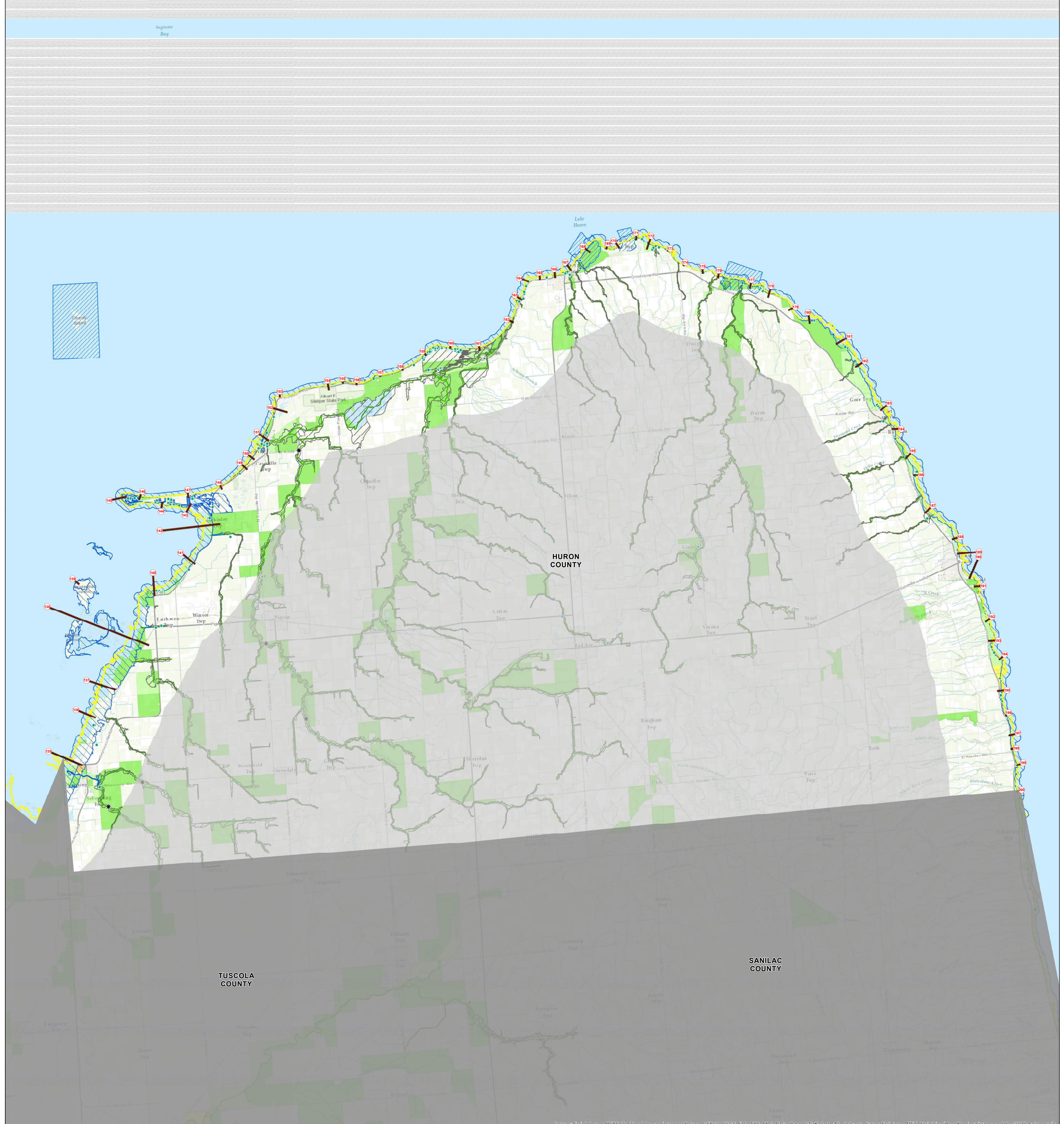
COASTAL STUDY LOCATOR



NATIONAL FLOOD INSURANCE PROGRAM
Draft Coastal Scoping Map

LAKE HURON COASTAL STUDY
BAY COUNTY, MICHIGAN COASTAL STUDY COMMUNITIES

Bangor, Charter Township of
 Bay City, City of
 Essexville, City of
 Fraser, Township of
 Hampton, Township of
 Kawkawlin, Township of
 Monitor, Township of
 Pinconning, City of
 Pinconning, Township of



MAP SYMBOLOGY

LEGEND

Transects	Effective Flood Hazard Areas	Coordinated Needs Management Strategy
Shoreline	ZONE A	Unverified
Dams	ZONE AE	Unknown
USGS Gages	0.2% ANNUAL CHANCE FLOOD	Valid
Letters of Map Change	AAL Data	
Coastal Barrier Resource System	Less than \$10,000	
	\$10,001 - \$100,000	
	\$100,001 - \$1,000,000	
	\$1,000,001 - \$5,000,000	
	Greater than \$5,000,000	



NATIONAL FLOOD INSURANCE PROGRAM

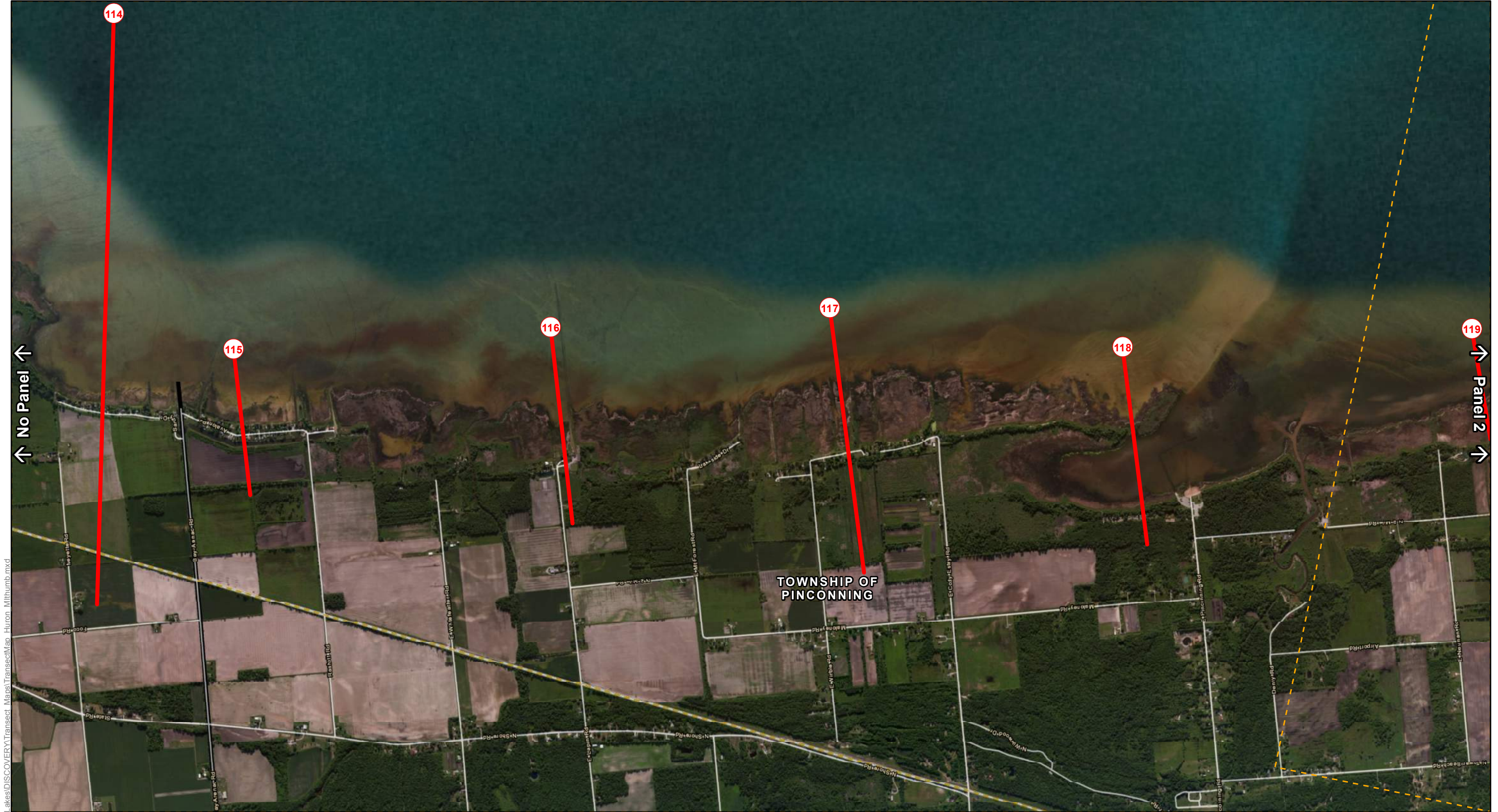
Draft Coastal Scoping Map

LAKE HURON COASTAL STUDY

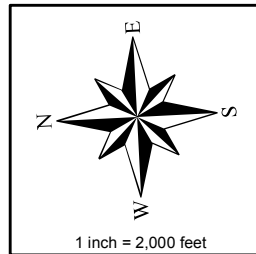
HURON COUNTY, MICHIGAN COASTAL STUDY COMMUNITIES

Bloomfield, Township of	Port Austin, Township of
Caseville, Township of	Port Austin, Village of
Dwight, Township of	Rubicon, Village of
Fairhaven, Township of	Rubicon, Township of
Gore, Township of	Sand Beach, Township of
Harbor Beach, City of	Sebewaing, Township of
Hume, Township of	Sebewaing, Village of
Huron, Township of	Sherman, Township of
Lake, Township of	Winsor, Township of
McKinley, Township of	

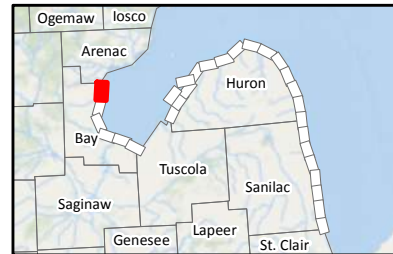
Attachment D
Proposed Draft Transect Figures



Path: C:\PROJECT DATA\FEMA\Great Lakes\DISCOVERY\Transect Maps\TransectMap_Huron_MilThumb.mxd



- Project Transect
- Adjoining Panel Edge
- Political Boundary



COUNTIES
 BAY COUNTY
 ARENAC COUNTY

COMMUNITIES
 TOWNSHIP OF PINCONNING



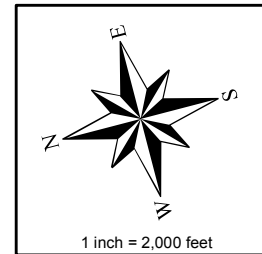
Lake Huron
DRAFT TRANSECTS
 Panel 1 of 29
 (Map Set: MI Lower Peninsula -
 Bay, Huron, and Sanilac Counties)



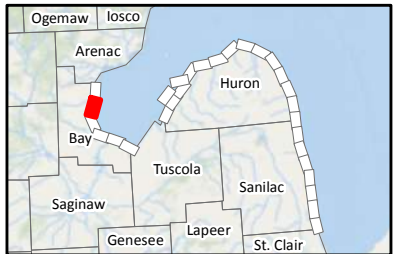
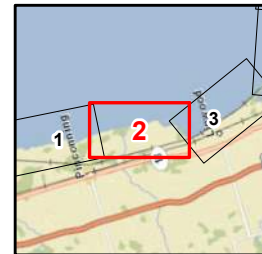
Path: C:\PROJECT_DATA\FEMA\Great_Lakes\DISCOVERY\Transect_Maps\TransectMap_Huron_Mitthumb.mxd

↑ Panel 1 ↑

↑ Panel 3 ↓



- Project Transect
- Adjoining Panel Edge
- Political Boundary

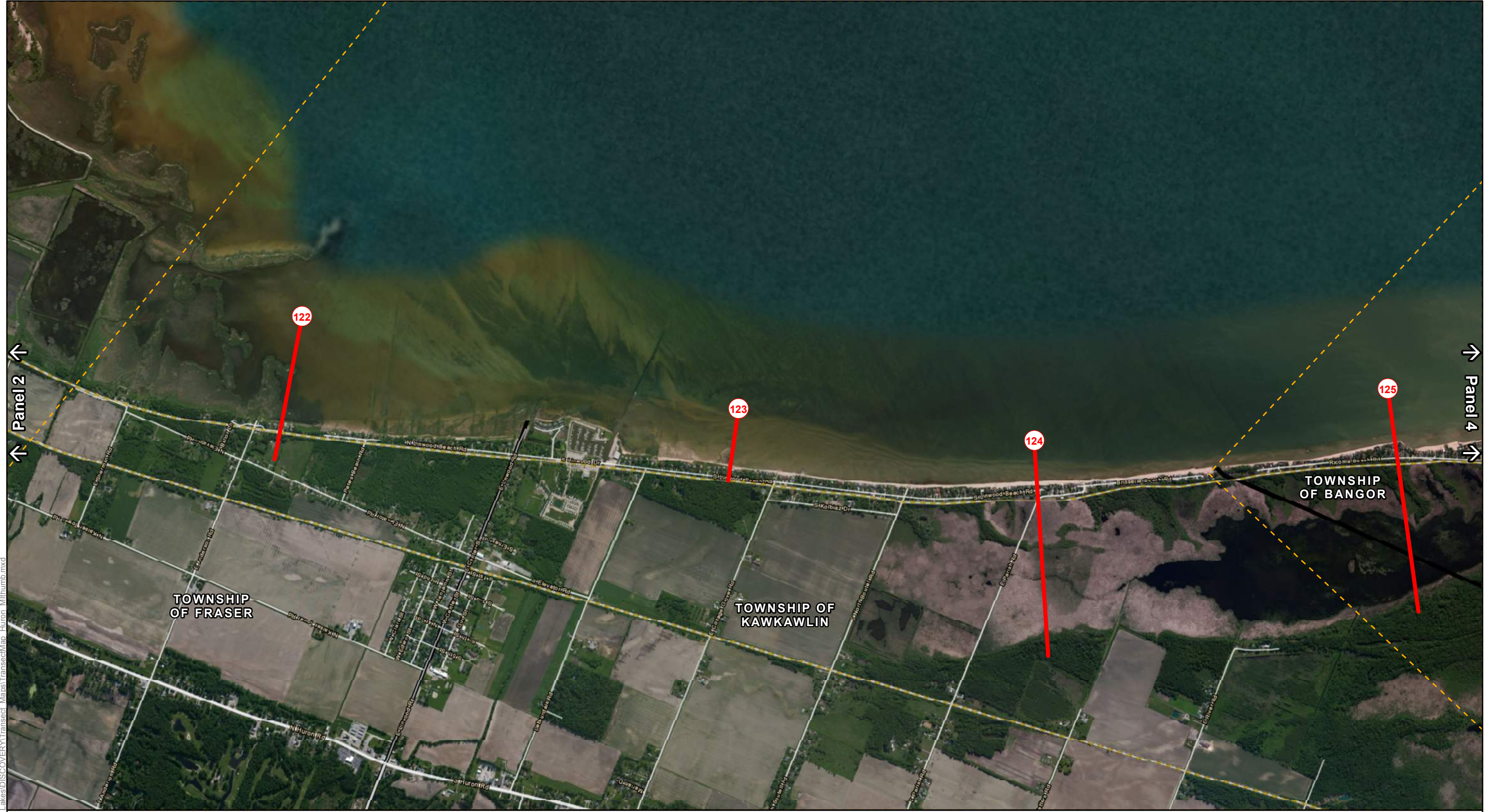


COUNTIES
BAY COUNTY

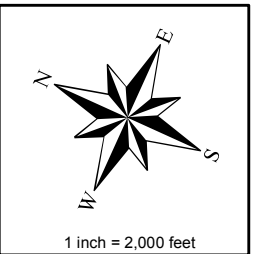
COMMUNITIES
TOWNSHIP OF PINCONNING
TOWNSHIP OF FRASER



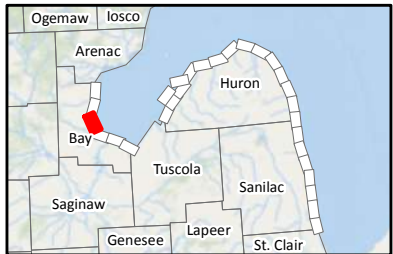
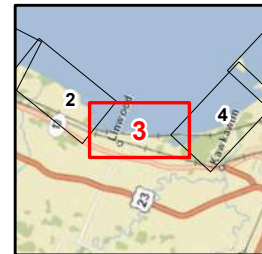
Lake Huron
DRAFT TRANSECTS
 Panel 2 of 29
 (Map Set: MI Lower Peninsula -
 Bay, Huron, and Sanilac Counties)



Path: C:\PROJECT_DATA\FEMA\Great_Lakes\DISCOVERY\Transect_Maps\TransectMap_Huron_MilThumb.mxd



- Project Transect
- Adjoining Panel Edge
- Political Boundary

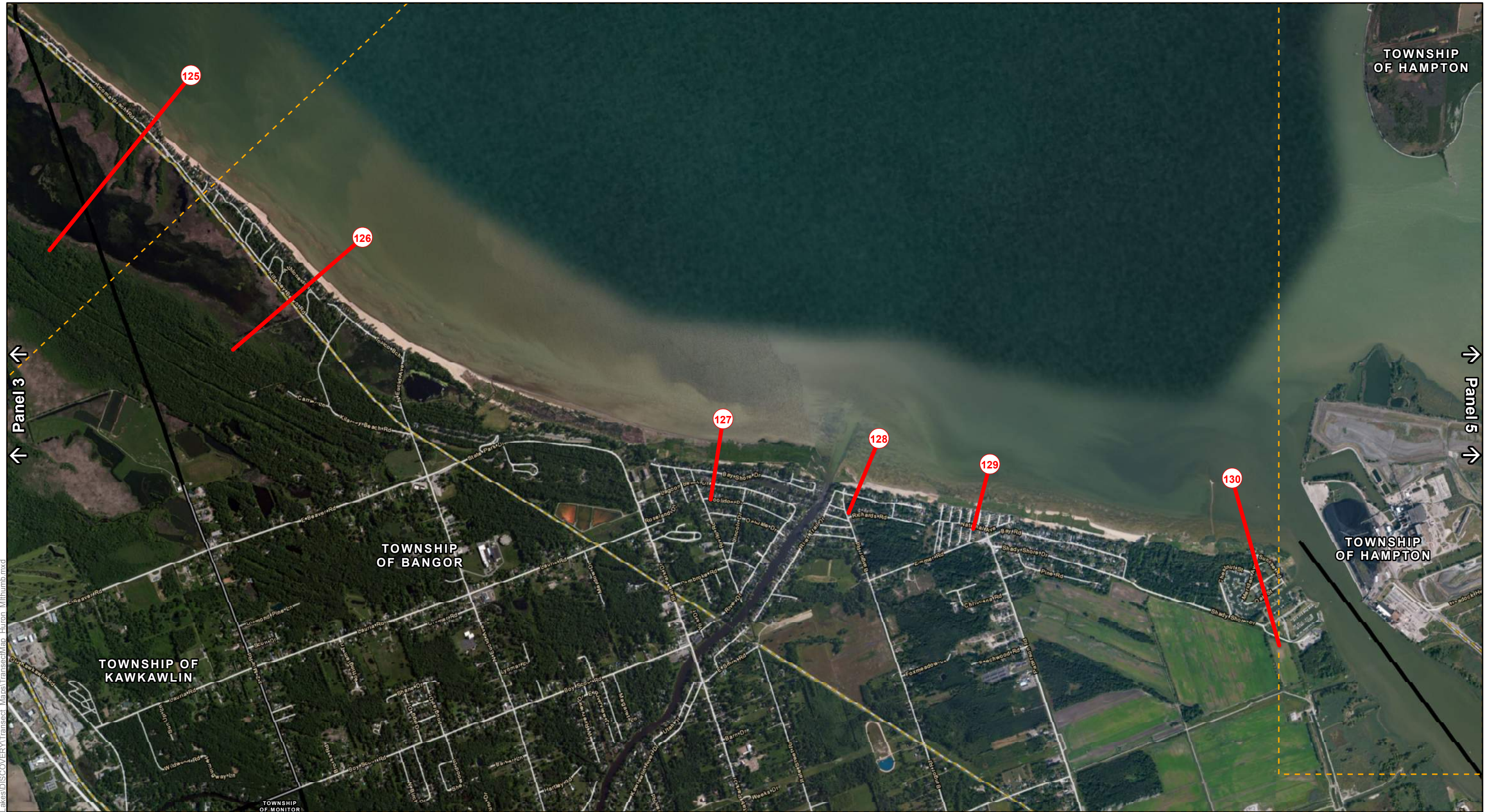


COUNTIES
BAY COUNTY

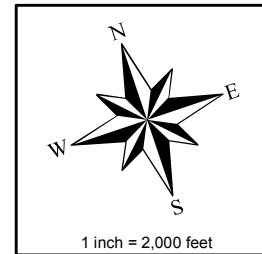


COMMUNITIES
TOWNSHIP OF KAWKAWLIN
TOWNSHIP OF FRASER
TOWNSHIP OF BANGOR

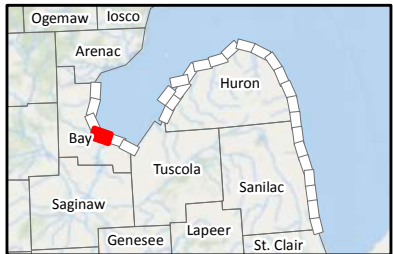
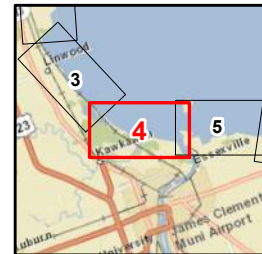
Lake Huron
DRAFT TRANSECTS
Panel 3 of 29
(Map Set: MI Lower Peninsula -
Bay, Huron, and Sanilac Counties)



Path: C:\PROJECT_DATA\FEMA\Great_Lakes\DISCOVERY\Transect_Maps\TransectMap_Huron_Mittrumb.mxd



- Project Transect
- Adjoining Panel Edge
- Political Boundary



COUNTIES
BAY COUNTY

COMMUNITIES
TOWNSHIP OF BANGOR
TOWNSHIP OF HAMPTON
TOWNSHIP OF KAWKAWLIN
TOWNSHIP OF MONITOR

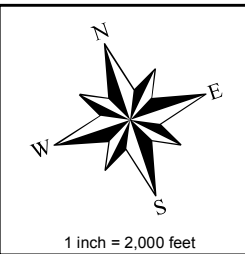
Lake Huron
DRAFT TRANSECTS
 Panel 4 of 29
 (Map Set: MI Lower Peninsula -
 Bay, Huron, and Sanilac Counties)



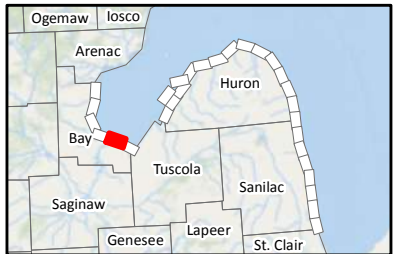
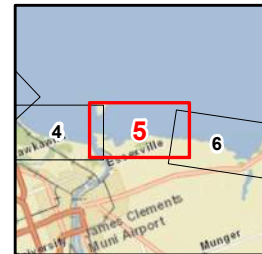
Path: C:\PROJECT_DATA\FEMA\Great_Lakes\DISCOVERY\Transect_Maps\TransectMap_Huron_MilThumb.mxd

↑ Panel 4 ↑

↑ Panel 6 ↓



- Project Transect
- Adjoining Panel Edge
- Political Boundary



COUNTIES
BAY COUNTY



COMMUNITIES
TOWNSHIP OF HAMPTON
TOWNSHIP OF BANGOR

Lake Huron
DRAFT TRANSECTS
Panel 5 of 29
(Map Set: MI Lower Peninsula -
Bay, Huron, and Sanilac Counties)

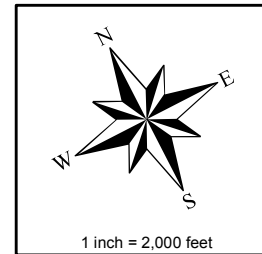


Path: C:\PROJECT_DATA\FEMA\Great_Lakes\DISCOVERY\Transect_Maps\TransectMap_Huron_MtHumb.mxd

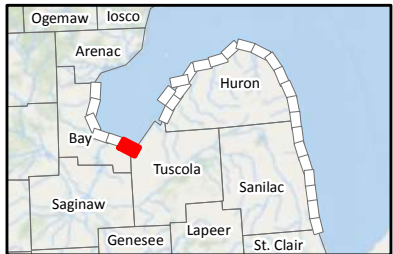
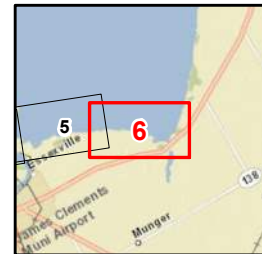
↑ Panel 5 ↑

↓ No Panel ↓

TOWNSHIP OF HAMPTON



- Project Transect
- Adjoining Panel Edge
- Political Boundary



COUNTIES
BAY COUNTY
TUSCOLA COUNTY

COMMUNITIES
TOWNSHIP OF HAMPTON



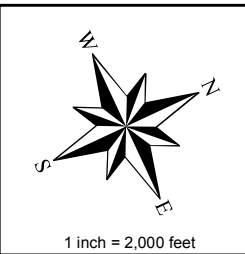
Lake Huron
DRAFT TRANSECTS
Panel 6 of 29
(Map Set: MI Lower Peninsula -
Bay, Huron, and Sanilac Counties)



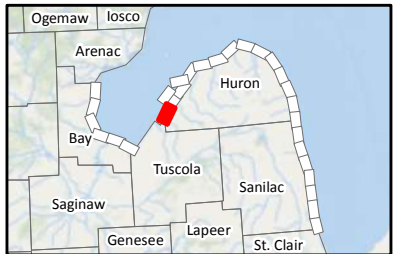
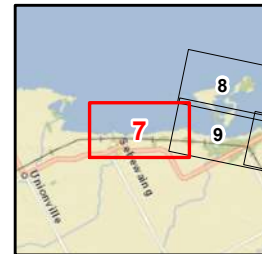
↑ No Panel ↑

↑ Panel 9 ↑

Path: C:\PROJECT DATA\FEMA\Great Lakes\DISCOVERY\Transect Maps\TransectMap_Huron_MilThumb.mxd



- Project Transect
- Adjoining Panel Edge
- Political Boundary



COUNTIES
 HURON COUNTY
 TUSCOLA COUNTY



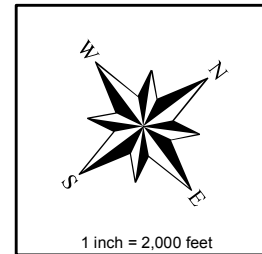
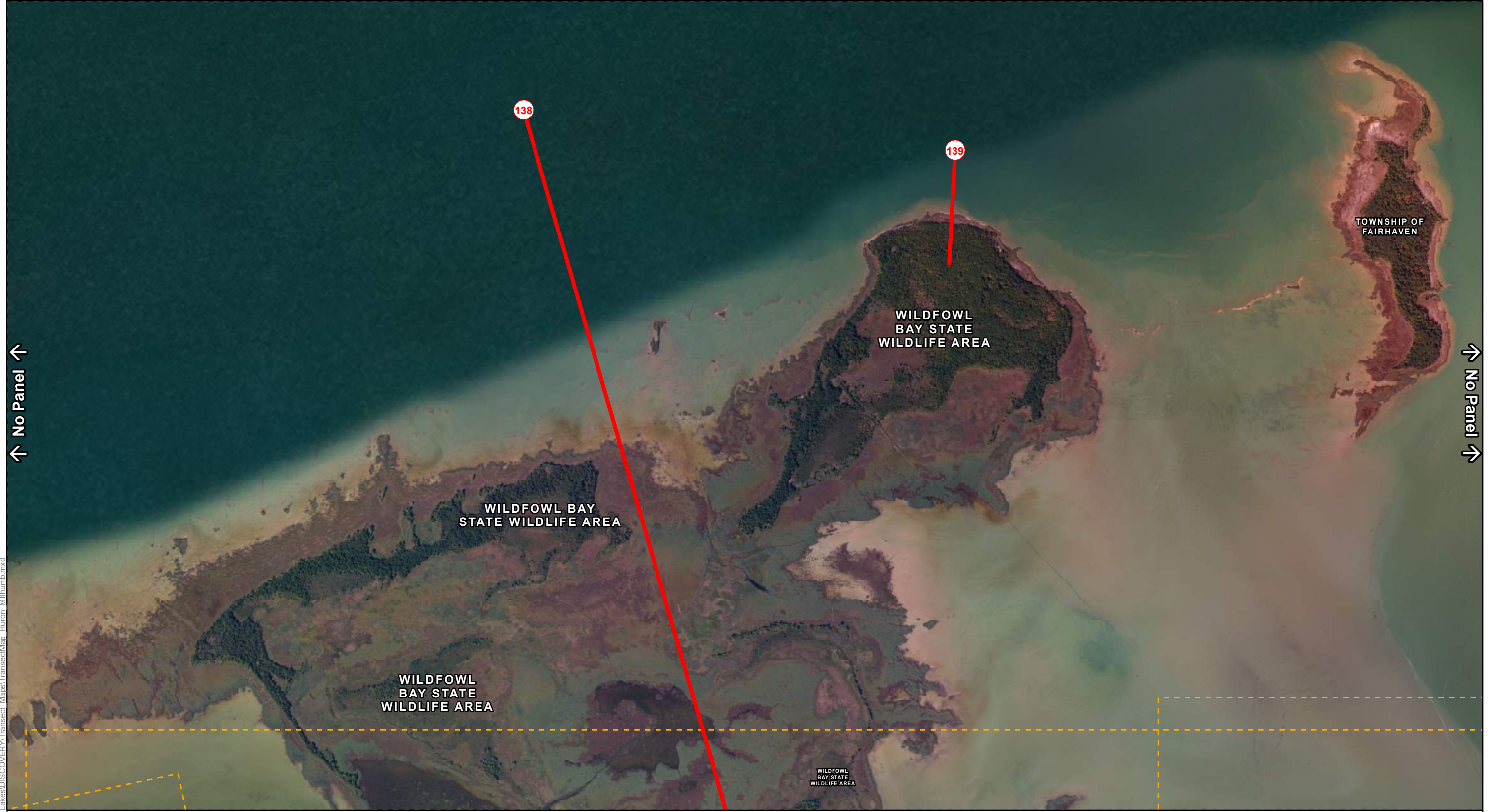
COMMUNITIES
 VILLAGE OF SEBEWAING
 TOWNSHIP OF SEBEWAING
 TOWNSHIP OF FAIRHAVEN
 WILDFOWL BAY STATE WILDLIFE AREA

Lake Huron
DRAFT TRANSECTS
 Panel 7 of 29
 (Map Set: MI Lower Peninsula -
 Bay, Huron, and Sanilac Counties)

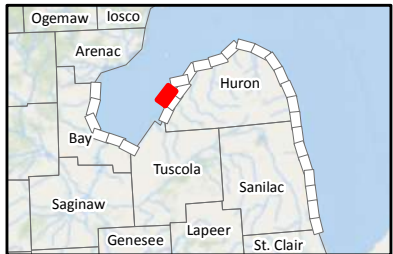
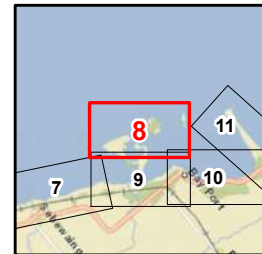
Path: C:\PROJECT_DATA\FEMA\Great_Lakes\DISCOVERY\Transect_Maps\TransectMap_Huron_Mlthumb.mxd

↑ No Panel ←

↘ No Panel ↘



- Project Transect
- Adjoining Panel Edge
- Political Boundary



COUNTIES
HURON COUNTY

COMMUNITIES
TOWNSHIP OF FAIRHAVEN
WILDFOWL BAY STATE WILDLIFE AREA



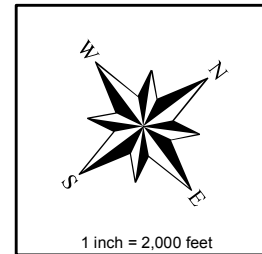
Lake Huron
DRAFT TRANSECTS
Panel 8 of 29
(Map Set: MI Lower Peninsula -
Bay, Huron, and Sanilac Counties)



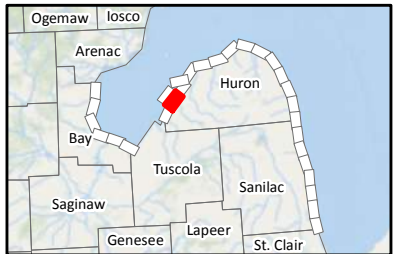
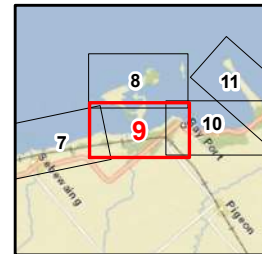
Path: C:\PROJECT_DATA\FEMA\Great_Lakes\DISCOVERY\Transect_Maps\TransectMap_Huron_Milthumb.mxd

↑ Panel 7 ↑

↑ Panel 10 ↓



- Project Transect
- Adjoining Panel Edge
- Political Boundary



COUNTIES
HURON COUNTY

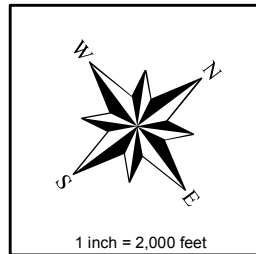


COMMUNITIES
TOWNSHIP OF FAIRHAVEN
TOWNSHIP OF MCKINLEY
TOWNSHIP OF WINSOR
WILDFOWL BAY STATE WILDLIFE AREA

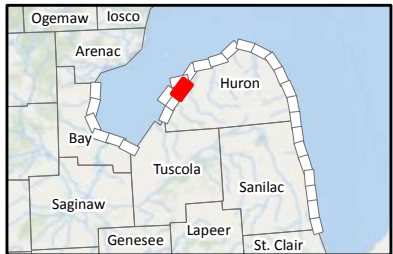
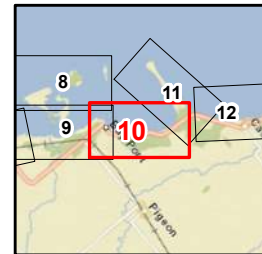
Lake Huron
DRAFT TRANSECTS
Panel 9 of 29
(Map Set: MI Lower Peninsula - Bay, Huron, and Sanilac Counties)



Path: C:\PROJECT_DATA\FEMA\Great_Lakes\DISCOVERY\Transect_Maps\TransectMap_Huron_MilThumb.mxd



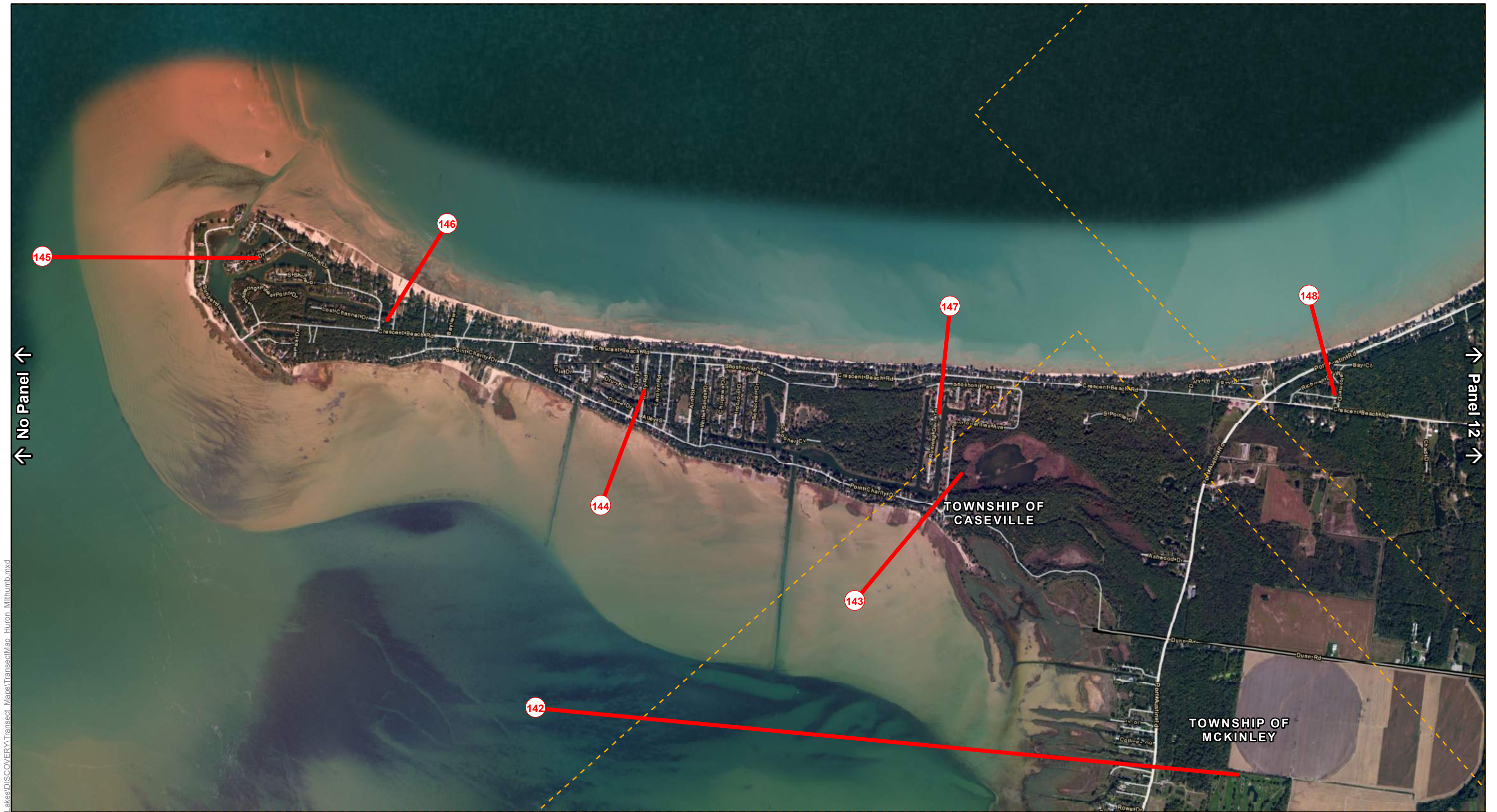
- Project Transect
- Adjoining Panel Edge
- Political Boundary



COUNTIES
 HURON COUNTY

COMMUNITIES
 TOWNSHIP OF CASEVILLE
 TOWNSHIP OF FAIRHAVEN
 TOWNSHIP OF MCKINLEY
 TOWNSHIP OF WINSOR
 WILDFOWL BAY STATE WILDLIFE AREA

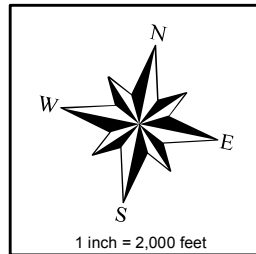
Lake Huron
DRAFT TRANSECTS
 Panel 10 of 29
 (Map Set: MI Lower Peninsula -
 Bay, Huron, and Sanilac Counties)



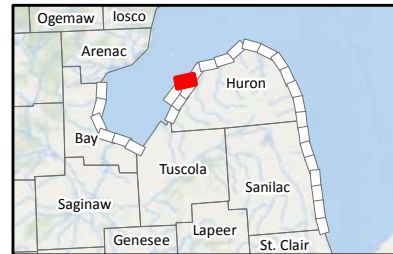
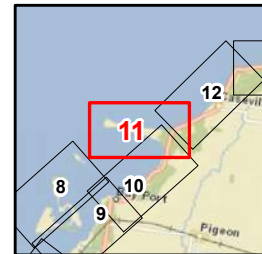
↑ No Panel ↑

↑ Panel 12 ↓

Path: C:\PROJECT_DATA\FEMA\Great_Lakes\DISCOVERY\Transect_Maps\TransectMap_Huron_Mlthumb.mxd



- Project Transect
- Adjoining Panel Edge
- Political Boundary



COUNTIES
HURON COUNTY

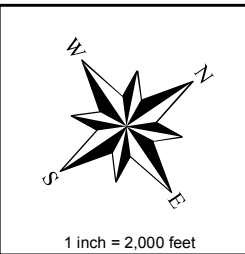
COMMUNITIES
TOWNSHIP OF MCKINLEY
TOWNSHIP OF CASEVILLE



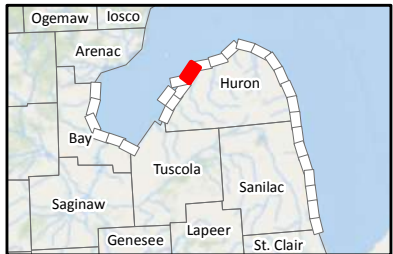
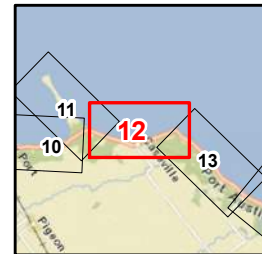
Lake Huron
DRAFT TRANSECTS
Panel 11 of 29
(Map Set: MI Lower Peninsula -
Bay, Huron, and Sanilac Counties)



Path: C:\PROJECT_DATA\FEMA\Great_Lakes\DISCOVERY\Transect_Maps\TransectMap_Huron_MlThumb.mxd



- Project Transect
- Adjoining Panel Edge
- Political Boundary



COUNTIES
HURON COUNTY

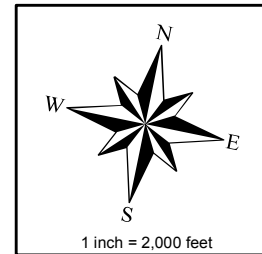


COMMUNITIES
VILLAGE OF CASEVILLE
TOWNSHIP OF MCKINLEY
TOWNSHIP OF LAKE
TOWNSHIP OF CASEVILLE
ALBERT E SLEEPER STATE PARK

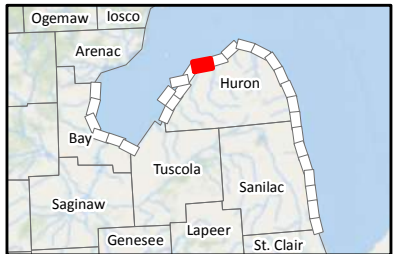
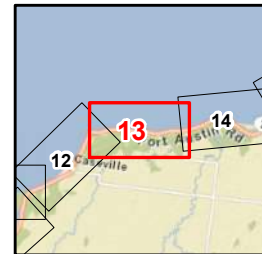
Lake Huron
DRAFT TRANSECTS
Panel 12 of 29
(Map Set: MI Lower Peninsula -
Bay, Huron, and Sanilac Counties)



Path: C:\PROJECT_DATA\FEMA\Great_Lakes\DISCOVER\Transect_Maps\TransectMap_Huron_Milthumb.mxd



- Project Transect
- Adjoining Panel Edge
- Political Boundary



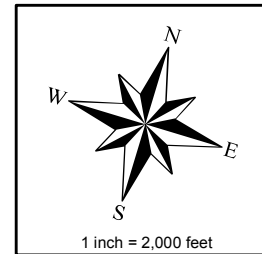
COUNTIES
HURON COUNTY

COMMUNITIES
TOWNSHIP OF LAKE
TOWNSHIP OF CASEVILLE
ALBERT E SLEEPER STATE PARK
RUSH LAKE STATE GAME AREA

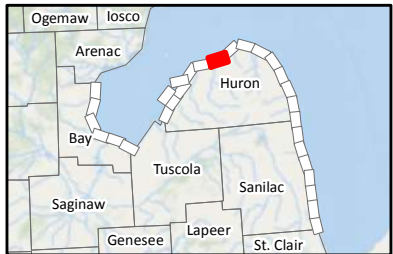
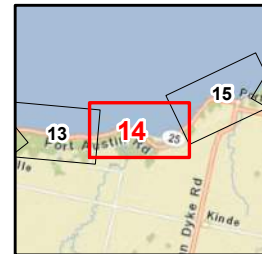
Lake Huron
DRAFT TRANSECTS
Panel 13 of 29
(Map Set: MI Lower Peninsula - Bay, Huron, and Sanilac Counties)



Path: C:\PROJECT_DATA\FEMA\Great_Lakes\DISCOVERY\Transect_Maps\TransectMap_Huron_MilThumb.mxd



- Project Transect
- Adjoining Panel Edge
- Political Boundary



COUNTIES
HURON COUNTY



COMMUNITIES
TOWNSHIP OF LAKE
TOWNSHIP OF HUME
PORT CRESCENT STATE PARK
RUSH LAKE STATE GAME AREA

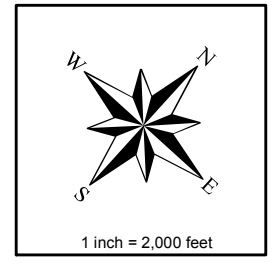
Lake Huron
DRAFT TRANSECTS
Panel 14 of 29
(Map Set: MI Lower Peninsula -
Bay, Huron, and Sanilac Counties)



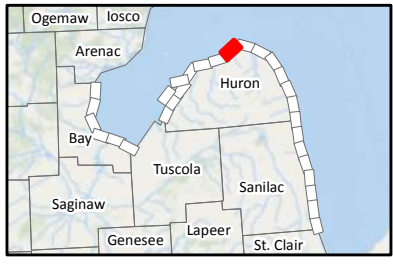
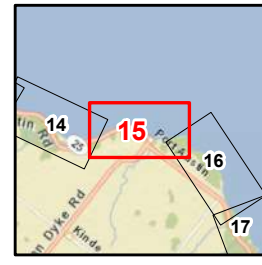
↑ Panel 14 ←

← Panel 16 ↓

Path: C:\PROJECT_DATA\FEMA\Great Lakes\DISCOVERY\Transect Maps\TransectMap_Huron_Milthumb.mxd



- Project Transect
- Adjoining Panel Edge
- Political Boundary



COUNTIES
HURON COUNTY



COMMUNITIES
VILLAGE OF PORT AUSTIN
TOWNSHIP OF PORT AUSTIN
TOWNSHIP OF POINTE AUX BARQUES
TOWNSHIP OF HUME
TOWNSHIP OF DWIGHT
PORT CRESCENT STATE PARK

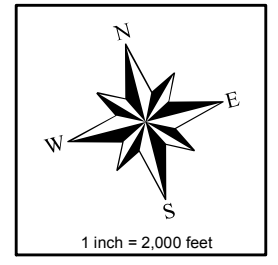
Lake Huron
DRAFT TRANSECTS
Panel 15 of 29
(Map Set: MI Lower Peninsula - Bay, Huron, and Sanilac Counties)



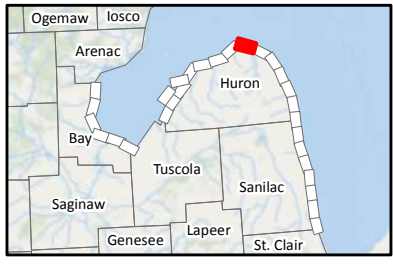
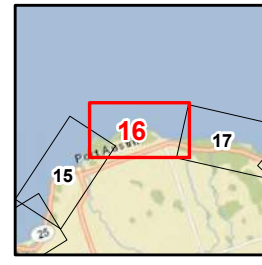
Path: C:\PROJECT_DATA\FEMA\Great_Lakes\DISCOVERY\Transect_Maps\TransectMap_Huron_MilThumb.mxd

↑ Panel 15 ←

← Panel 17 ↓



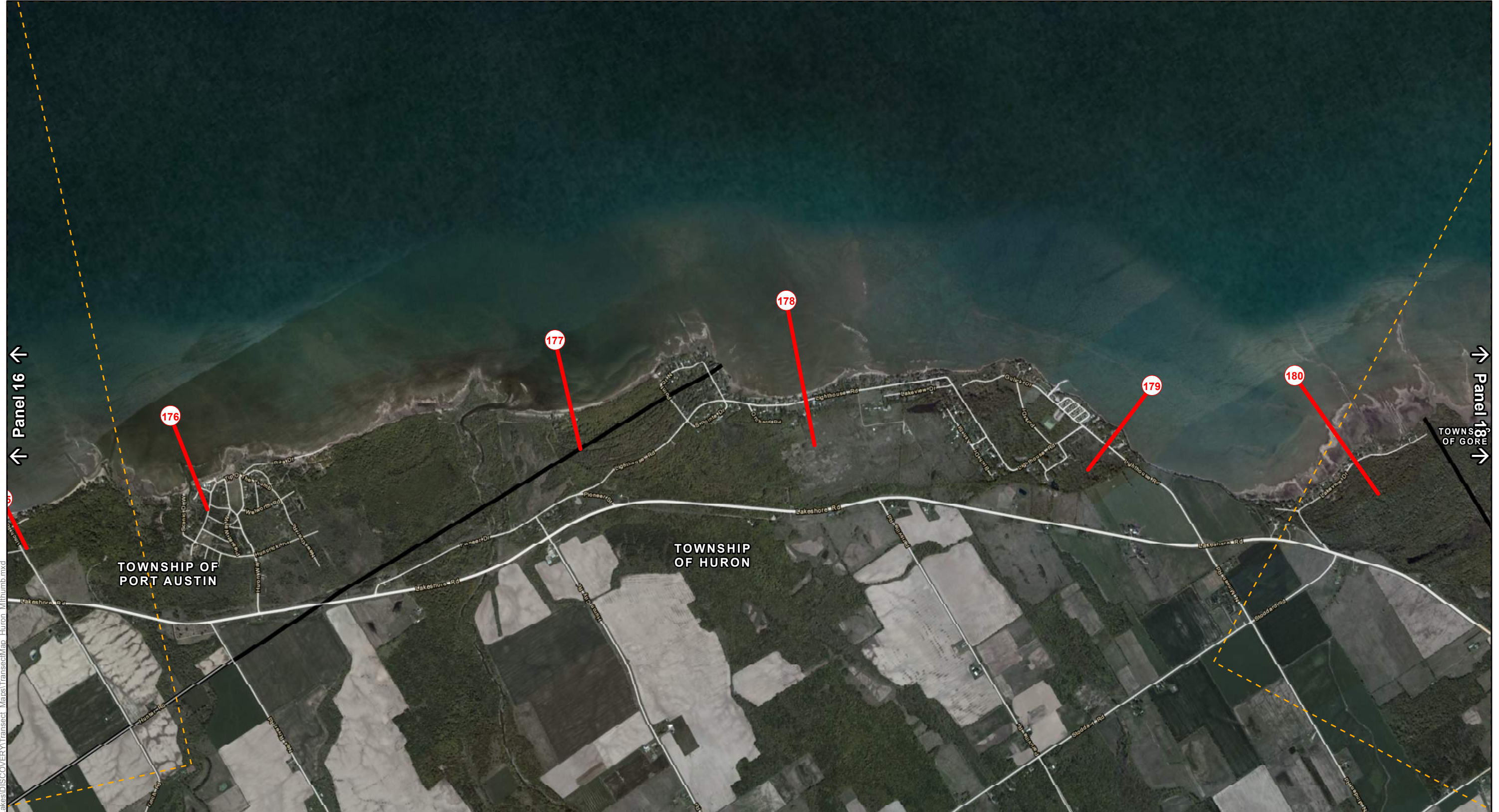
- Project Transect
- Adjoining Panel Edge
- Political Boundary



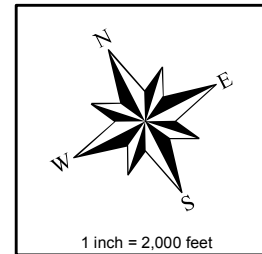
COUNTIES
HURON COUNTY

COMMUNITIES
TOWNSHIP OF PORT AUSTIN
TOWNSHIP OF POINTE AUX BARQUES
TOWNSHIP OF HURON

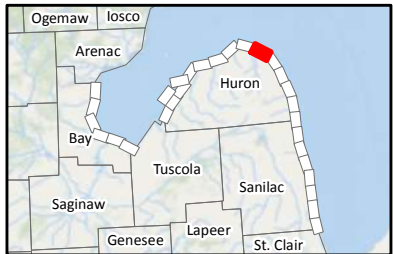
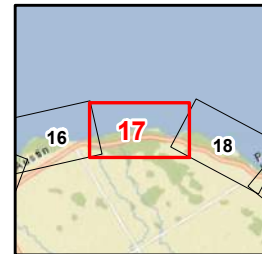
Lake Huron
DRAFT TRANSECTS
Panel 16 of 29
(Map Set: MI Lower Peninsula - Bay, Huron, and Sanilac Counties)



Path: C:\PROJECT_DATA\FEMA\Great_Lakes\DISCOVERY\Transect_Maps\TransectMap_Huron_Mittrumb.mxd



- Project Transect
- Adjoining Panel Edge
- Political Boundary



COUNTIES
HURON COUNTY

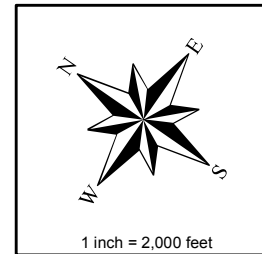


COMMUNITIES
TOWNSHIP OF PORT AUSTIN
TOWNSHIP OF HURON
TOWNSHIP OF GORE

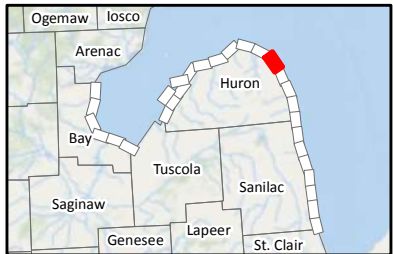
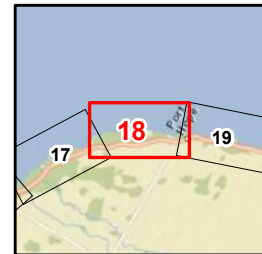
Lake Huron
DRAFT TRANSECTS
Panel 17 of 29
(Map Set: MI Lower Peninsula - Bay, Huron, and Sanilac Counties)



Path: C:\PROJECT_DATA\FEMA\Great_Lakes\DISCOVERY\Transect_Maps\TransectMap_Huron_Milthumb.mxd



- Project Transect
- Adjoining Panel Edge
- Political Boundary



COUNTIES
 HURON COUNTY

COMMUNITIES
 VILLAGE OF PORT HOPE
 TOWNSHIP OF GORE
 TOWNSHIP OF HURON
 TOWNSHIP OF RUBICON

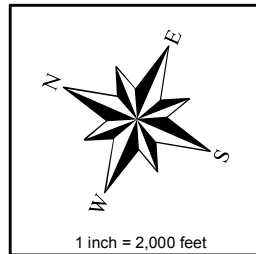
Lake Huron
DRAFT TRANSECTS
 Panel 18 of 29
 (Map Set: MI Lower Peninsula -
 Bay, Huron, and Sanilac Counties)



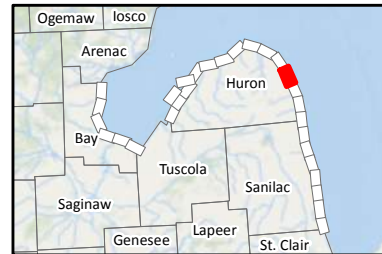
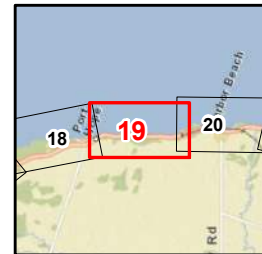
Path: C:\PROJECT_DATA\FEMA\Great_Lakes\DISCOVERY\Transect_Maps\TransectMap_Huron_Mittumb.mxd

↑ Panel 18 ↑

↑ Panel 20 ↑



- Project Transect
- Adjoining Panel Edge
- Political Boundary



COUNTIES
HURON COUNTY



COMMUNITIES
VILLAGE OF PORT HOPE
TOWNSHIP OF RUBICON
TOWNSHIP OF SAND BEACH

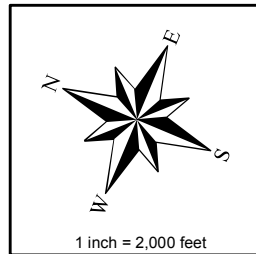
Lake Huron
DRAFT TRANSECTS
Panel 19 of 29
(Map Set: MI Lower Peninsula -
Bay, Huron, and Sanilac Counties)



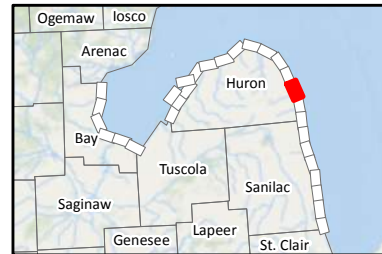
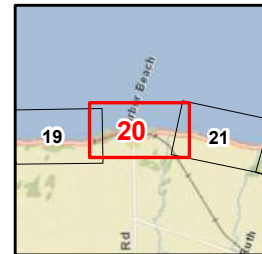
Path: C:\PROJECT_DATA\FEMA\Great_Lakes\DISCOVERY\Transect_Maps\TransectMap_Huron_Milthumb.mxd

↑ Panel 19 ←

← Panel 21 ↓



- Project Transect
- Adjoining Panel Edge
- Political Boundary



COUNTIES
HURON COUNTY

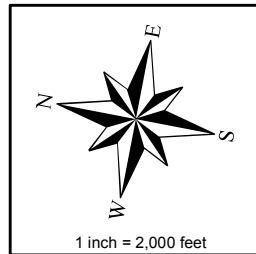
COMMUNITIES
CITY OF HARBOR BEACH
TOWNSHIP OF RUBICON
TOWNSHIP OF SAND BEACH



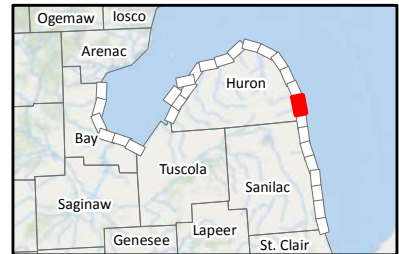
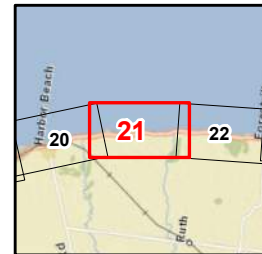
Lake Huron
DRAFT TRANSECTS
Panel 20 of 29
(Map Set: MI Lower Peninsula -
Bay, Huron, and Sanilac Counties)



Path: C:\PROJECT_DATA\FEMA\Great_Lakes\DISCOVERY\Transect_Maps\TransectMap_Huron_Milthumb.mxd



- Project Transect
- Adjoining Panel Edge
- Political Boundary



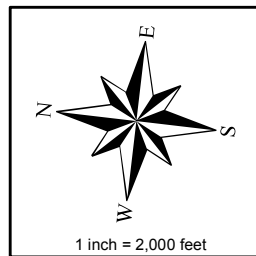
COUNTIES
HURON COUNTY

COMMUNITIES
TOWNSHIP OF SHERMAN
TOWNSHIP OF SAND BEACH

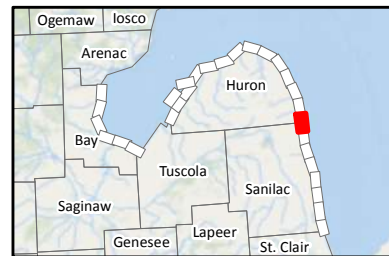
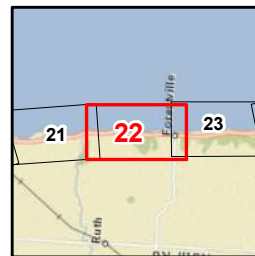


Lake Huron
DRAFT TRANSECTS
Panel 21 of 29
(Map Set: MI Lower Peninsula -
Bay, Huron, and Sanilac Counties)

Path: C:\PROJECT_DATA\FEMA\Great_Lakes\DISCOVERY\Transect_Maps\TransectMap_Huron_Milthumb.mxd



- Project Transect
- Adjoining Panel Edge
- Political Boundary



COUNTIES
 HURON COUNTY
 SANILAC COUNTY



COMMUNITIES
 VILLAGE OF FORESTVILLE
 TOWNSHIP OF SHERMAN
 TOWNSHIP OF DELAWARE

Lake Huron
DRAFT TRANSECTS
 Panel 22 of 29
 (Map Set: MI Lower Peninsula -
 Bay, Huron, and Sanilac Counties)